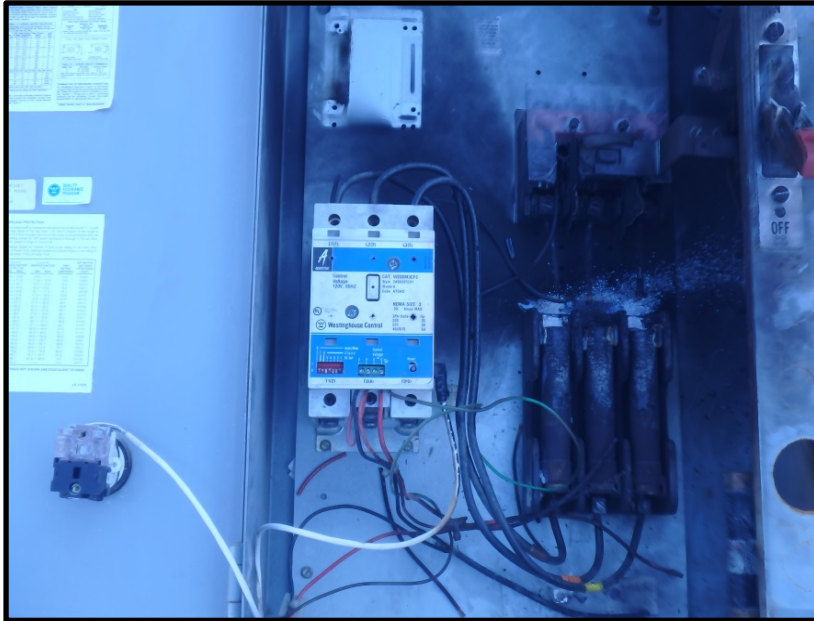


METAL / NONMETAL

Serious Accident

Surface Limestone Mine – An electrician was working on an energized three-phase electrical circuit for a water pump. After replacing a blown fuse, the electrician noticed the pump motor was single-phasing. While attempting to attach the third phase, he accidentally dropped the wire across an energized lug. The electrician received a severe flash burn to his hands.



Best Practices

- De-energize, lock out and tag out all power circuits and electrical equipment before performing any work on electrical circuits and equipment.
- Simply shutting off the power is not enough. Hazardous conditions can still exist. Make sure to always TEST BEFORE YOU TOUCH.
- Following the Lock Out/Tag Out procedures established by your company, make sure that each person working on an electrical circuit or system personally applies his or her own individual lock and tag.
- Make sure that all persons, including you, are in a safe location before energizing any equipment.
- Wear appropriate Personal Protective Equipment, including electrically rated gloves, hard hat, and eye protection and if available, NFPA 70E compliant arc flash or flame resistant protective clothing.
- Always maintain de-energizing devices in operable condition.

