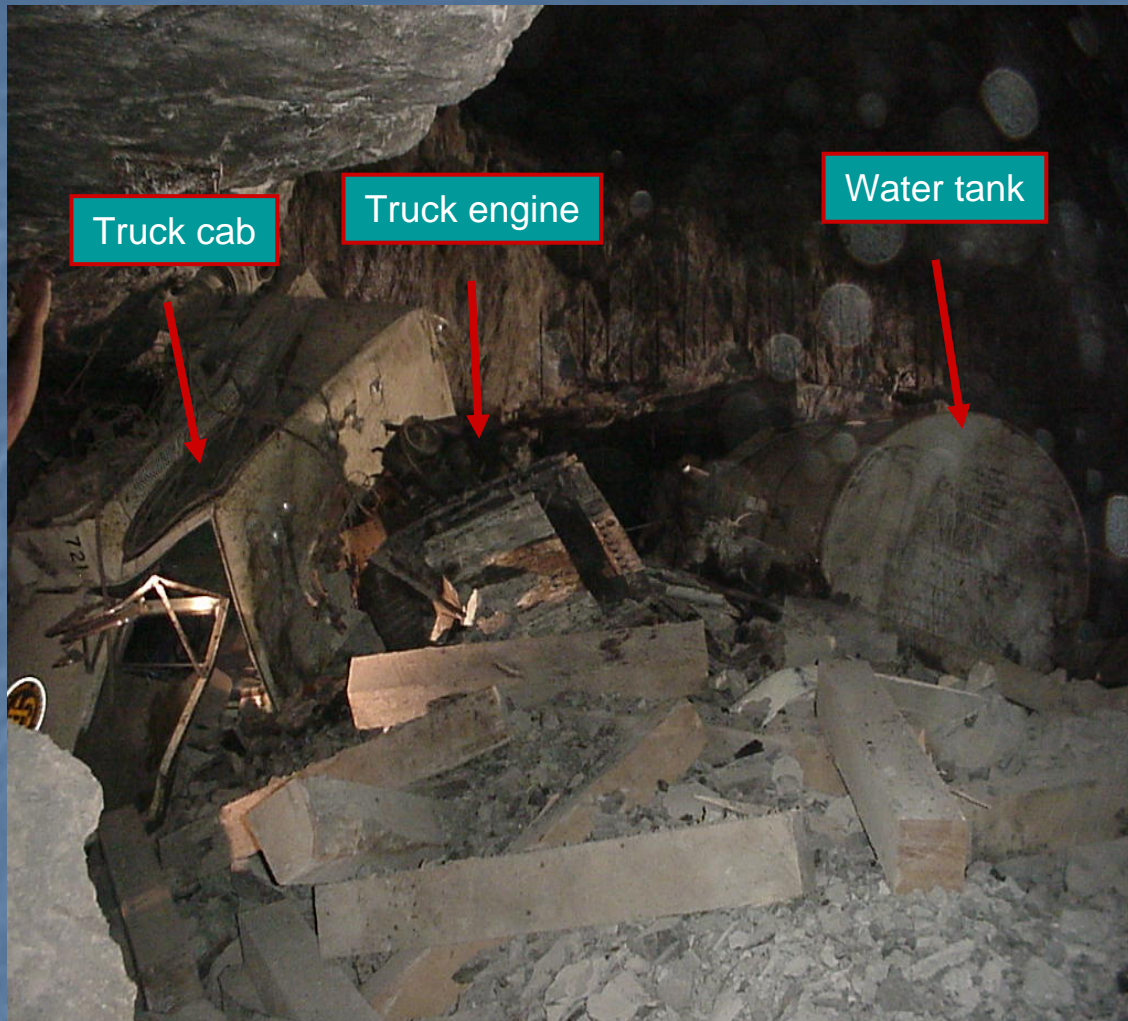


MNM Fatal 2005-27

- Powered Haulage
- September 28, 2005 (Missouri)
- Crushed Stone Operation
- Repairman
- 39 years old
- 1 year, 34 weeks mining experience

Overview

The victim was fatally injured when the water truck he was operating crashed at the bottom of the mine's slope entrance. The water truck, owned by a nearby asphalt plant, was placed in service to address dusty conditions in the mine even though braking systems on the truck had not been maintained in functional condition.



Causal Factors

- Management's policies and procedures failed to ensure that all activities on mine property were adequately overseen by supervision.
- Management's safety process failed to ensure that miners were provided a safe and healthy working environment.
- Management's policies and procedures failed to ensure that self-propelled mobile equipment with defective brakes was not utilized by employees.

Best Practices

- Stop, Look, Analyze, and Manage (SLAM) each task.
- Ensure adequate pre-operational checks are conducted on all self-propelled mobile equipment and that any defects found are promptly corrected.
- Ensure that service brakes will stop and hold mobile equipment prior to operating mobile equipment.
- Exercise caution when approaching grades and operate mobile equipment in the appropriate gear at speeds consistent with the grade being traveled.