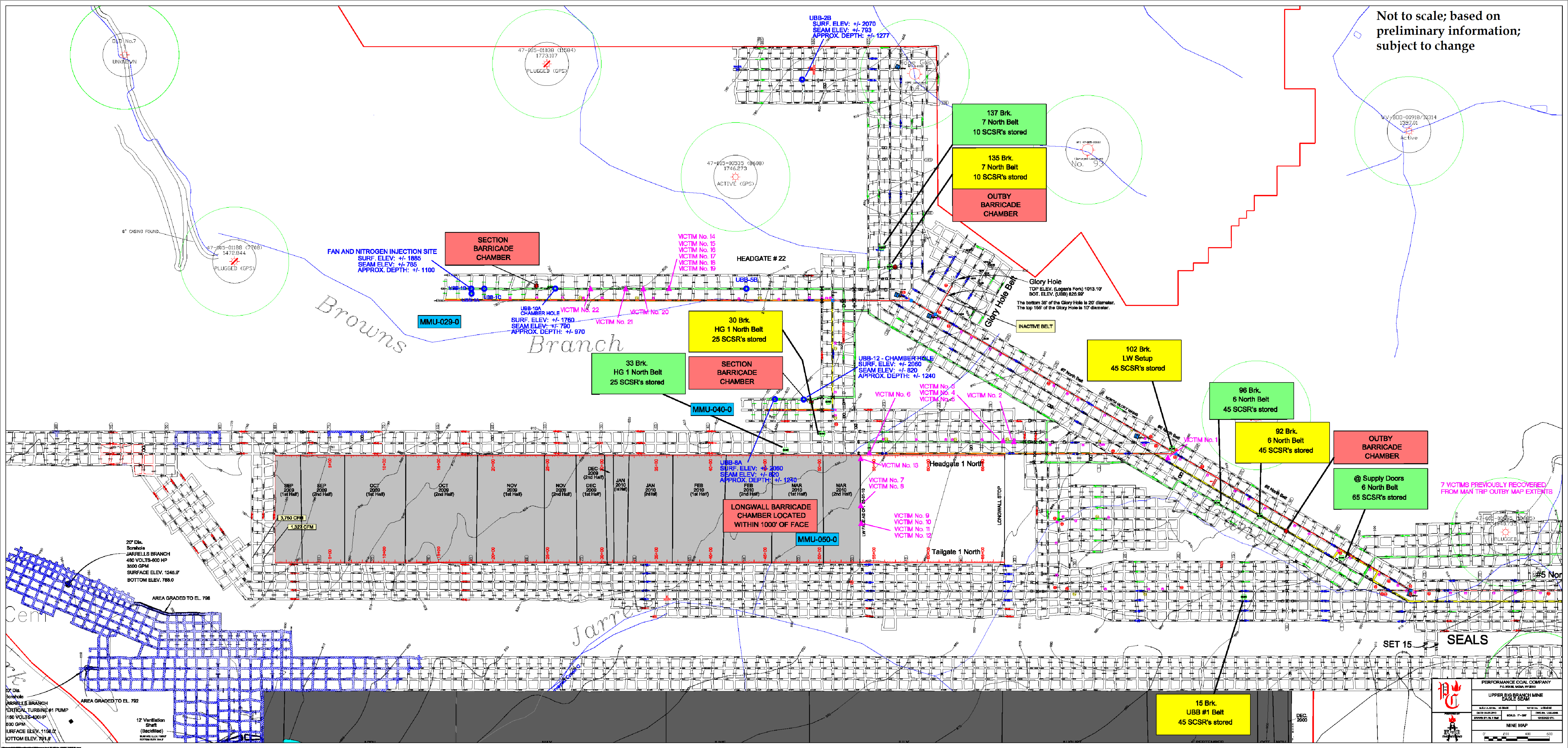


Not to scale; based on preliminary information; subject to change



UNKLONN
D.D. No.7

47-005-01038 (11584)
1773.107
PLUGGED (GPS)

47-005-00335 (8608)
1746.273
ACTIVE (GPS)

UBB-2B
SURF. ELEV: +/- 2070
SEAM ELEV: +/- 793
APPROX. DEPTH: +/- 1277

137 Brk.
7 North Belt
10 SCSR's stored

135 Brk.
7 North Belt
10 SCSR's stored

OUTBY
BARRICADE
CHAMBER

WT 47-005-01861
No. 93

47-005-00918/10314
1332.01
Active

FAN AND NITROGEN INJECTION SITE
SURF. ELEV: +/- 1885
SEAM ELEV: +/- 785
APPROX. DEPTH: +/- 1100

SECTION
BARRICADE
CHAMBER

VICTIM No. 14
VICTIM No. 15
VICTIM No. 17
VICTIM No. 18
VICTIM No. 19

HEADGATE # 22

MMU-029-0

UBB-10A
CHAMBER HOLE
SURF. ELEV: +/- 1760
SEAM ELEV: +/- 790
APPROX. DEPTH: +/- 970

30 Brk.
HG 1 North Belt
25 SCSR's stored

SECTION
BARRICADE
CHAMBER

MMU-040-0

UBB-12 - CHAMBER HOLE
SURF. ELEV: +/- 2060
SEAM ELEV: +/- 820
APPROX. DEPTH: +/- 1240

Glory Hole
TOP ELEV. (Logan's Fork) 1013.10'
BOT. ELEV. (UBB) 826.69'
The bottom 35' of the Glory Hole is 20' diameter.
The top 155' of the Glory Hole is 10' diameter.

102 Brk.
LW Setup
45 SCSR's stored

96 Brk.
6 North Belt
45 SCSR's stored

92 Brk.
6 North Belt
45 SCSR's stored

OUTBY
BARRICADE
CHAMBER

@ Supply Doors
6 North Belt
65 SCSR's stored

7 VICTIMS PREVIOUSLY RECOVERED
FROM MAN TRIP OUTBY MAP EXTENTS

UBB-8A
SURF. ELEV: +/- 2060
SEAM ELEV: +/- 820
APPROX. DEPTH: +/- 1240

LONGWALL BARRICADE
CHAMBER LOCATED
WITHIN 1000' OF FACE

MMU-050-0

VICTIM No. 13
VICTIM No. 7
VICTIM No. 8

VICTIM No. 9
VICTIM No. 10
VICTIM No. 11
VICTIM No. 12

Headgate 1 North

Tailgate 1 North

SEP 2009 (1st Half)	SEP 2009 (2nd Half)	OCT 2009 (1st Half)	OCT 2009 (2nd Half)	NOV 2009 (1st Half)	NOV 2009 (2nd Half)	DEC 2009 (1st Half)	DEC 2009 (2nd Half)	JAN 2010 (1st Half)	JAN 2010 (2nd Half)	FEB 2010 (1st Half)	FEB 2010 (2nd Half)	MAR 2010 (1st Half)	MAR 2010 (2nd Half)
---------------------	---------------------	---------------------	---------------------	---------------------	---------------------	---------------------	---------------------	---------------------	---------------------	---------------------	---------------------	---------------------	---------------------

3,760 CFM

1,322 CFM

20" Dia.
Borehole
JARRELLS BRANCH
450 VOLTS-800 HP
3500 GPM
SURFACE ELEV. 1246.9'
BOTTOM ELEV. 788.0'

AREA GRADED TO EL. 796

10" Dia.
Borehole
JARRELLS BRANCH
VERTICAL TURBINE #1 PUMP
180 VOLTS-400HP
500 GPM
SURFACE ELEV. 1158.0'
BOTTOM ELEV. 791.8'

12 Ventilation
Shaft
(Backfill)

AREA GRADED TO EL. 792

PERFORMANCE COAL COMPANY
P.O. BOX 1034, WYOMING, WY 83001

UPPER BIG BRANCH MINE
EAGLE SEAM

DATE: 11/11/2010
SCALE: 1" = 500'
DRAWN BY: J.S. [Name]
CHECKED BY: [Name]

MINE MAP

0' 200' 400' 600'

DEC. 2000