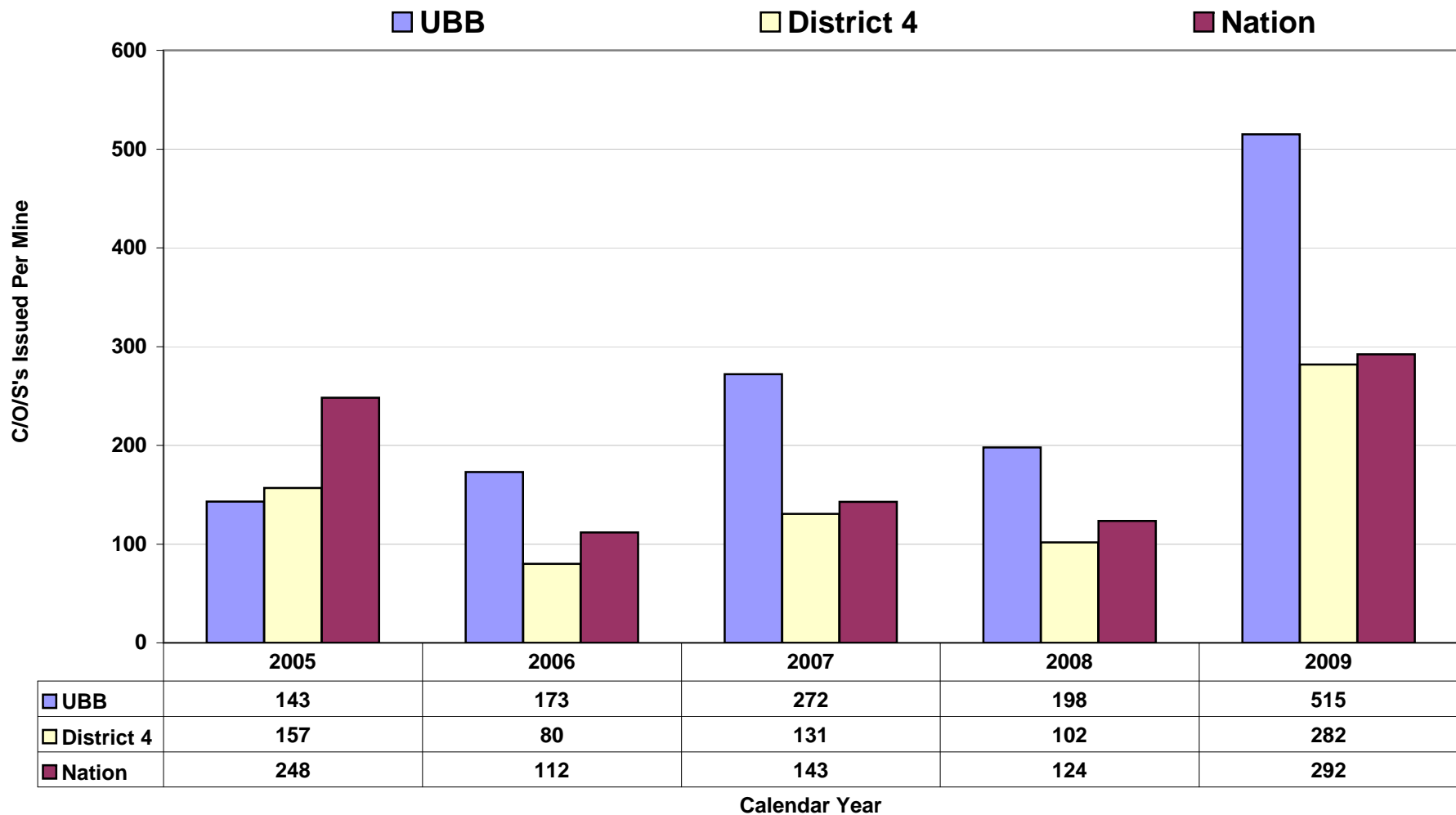


## Average Issuances per Mine [citations/orders/safeguards]



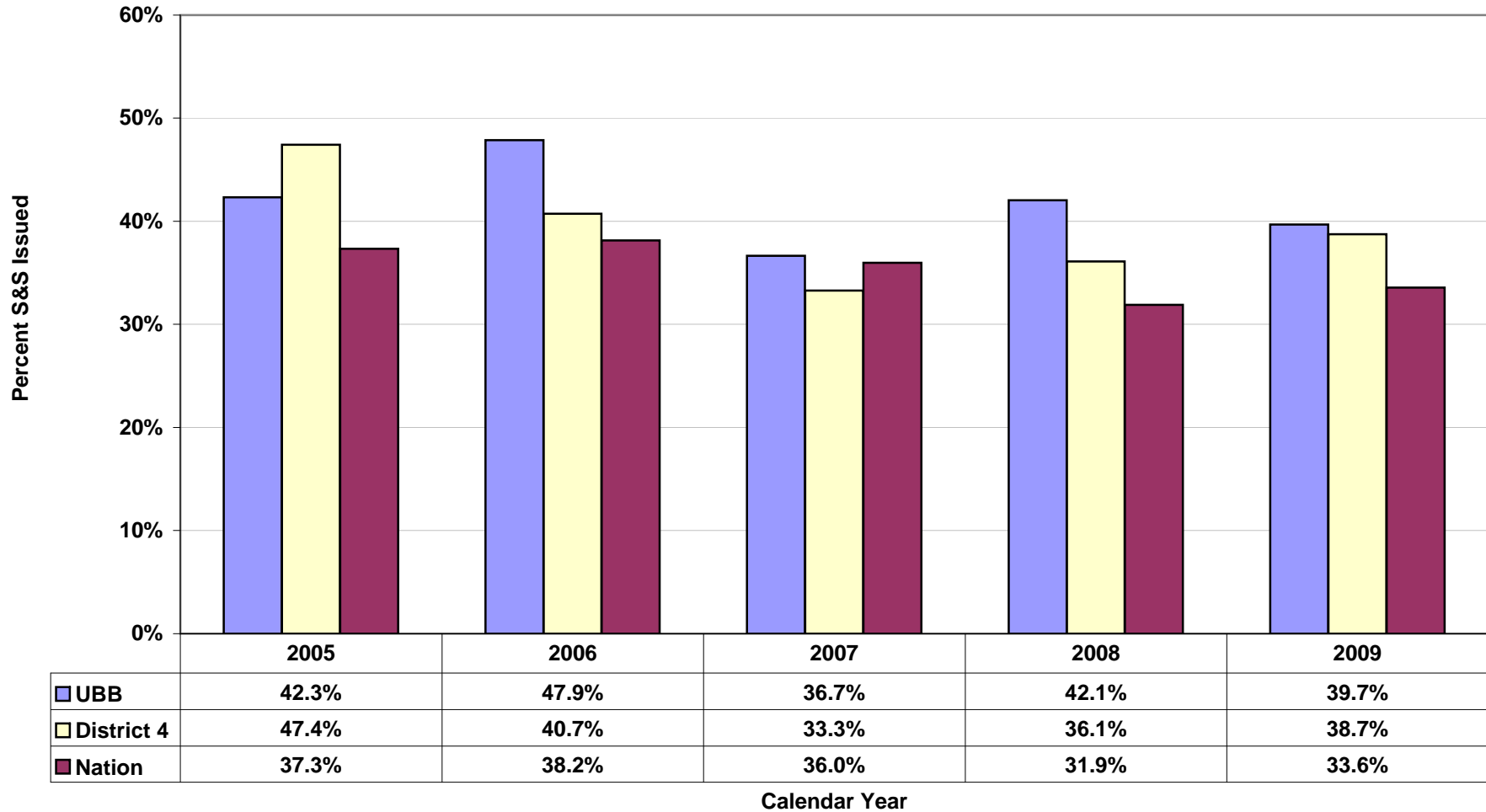
\*This graph compares mines with similar employment and production characteristics

## S&S Percent

■ UBB

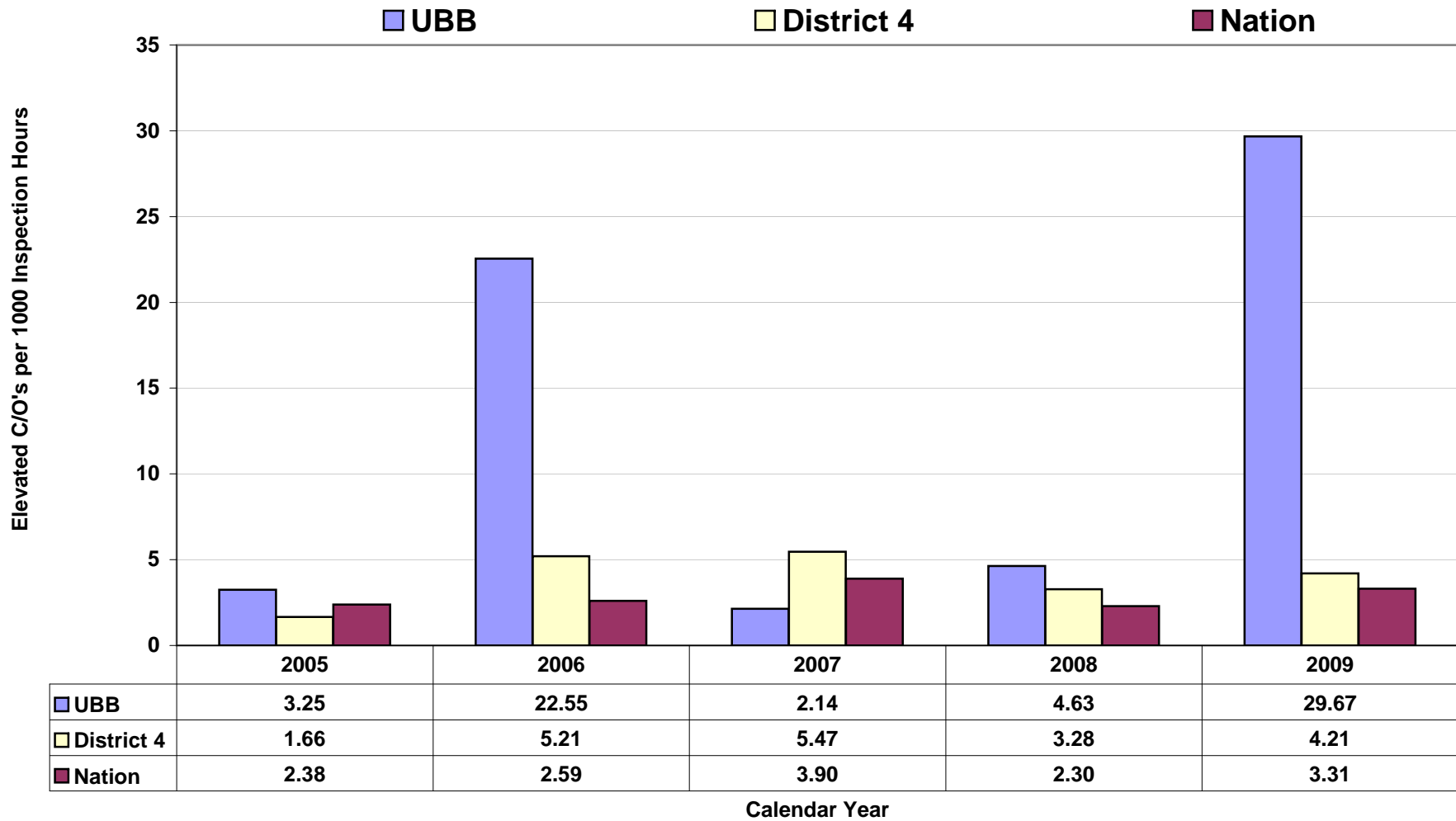
■ District 4

■ Nation



\*This graph compares mines with similar employment and production characteristics

## Elevated Enforcement [104(d), 107(a), 104(b)]



\*This graph compares mines with similar employment and production characteristics

## Average MSHA Inspection Days Per Month at UBB

