

Jun 22 2006 7:27:57 PM

Robert Bates

Thank you for using Vaisala's STRIKE<sup>®</sup>net to validate the referenced claim. Your report was generated using data from Vaisala's National Lightning Detection Network<sup>®</sup>, the most comprehensive archive database in North America.

## STRIKE<sup>®</sup>net Report 162412

Claim Number: N/A

Insured/Claimant Name: N/A

Approx. Claim/Loss Value:

Items Damaged/Loss Type:

Claim Address:

Search Period: May 19 2006 6:00:00 PM US/Eastern

May 20 2006 5:59:00 PM US/Eastern

Search Center Point: 36.878600° N (Latitude), 82.952500° W (Longitude)

Search Radius: 5 mi/8 km around the given location.

Comments: 4 strikes were detected by the National Lightning Detection Network for the given time period and location.

Thank you again for selecting STRIKE<sup>®</sup>net. If you have any questions please contact us at 1 800 283 4557 or [thunderstorm.support@vaisala.com](mailto:thunderstorm.support@vaisala.com).

Best Regards,

The Vaisala STRIKE<sup>®</sup>net Team

## STRIKEnet Report 162412

Report Title: Holmes Mill, KY

Total Lightning Strokes Detected: 4

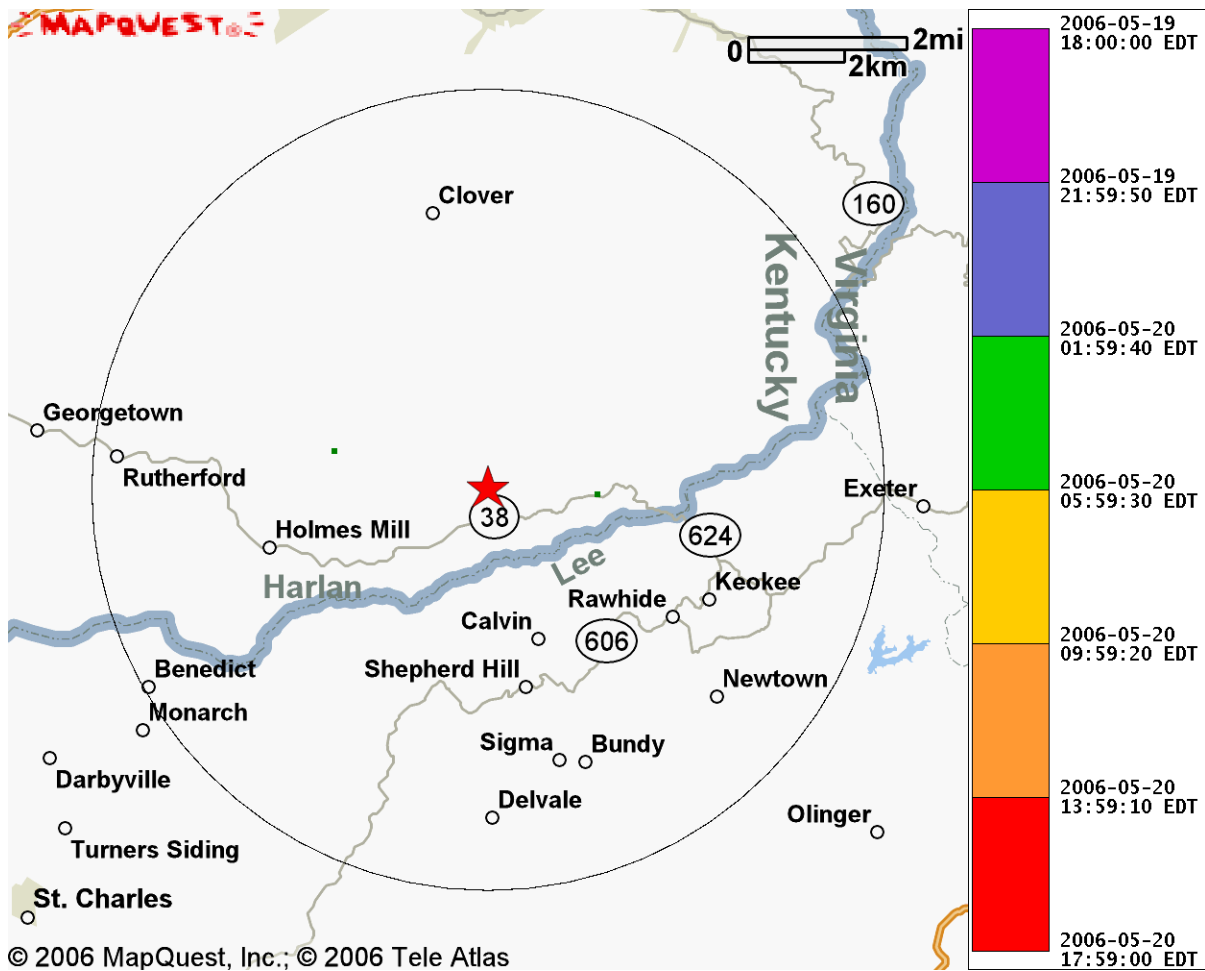
Lightning Strokes Detected within 5 mi/8 km radius: 2

Lightning Strokes Detected beyond 5 mi/8 km whose confidence ellipse overlaps the radius: 2

Search Radius: 5 mi/8 km

Time Span: May 19 2006 6:00:00 PM US/Eastern to May 20 2006 5:59:00 PM US/Eastern

### Location Points For Lightning Strokes



Lightning data provided by Vaisala's NLDN® and/or Environment Canada's CLDN.

## STRIKEnet Report 162412

Report Title: Holmes Mill, KY

Total Lightning Strokes Detected: 4

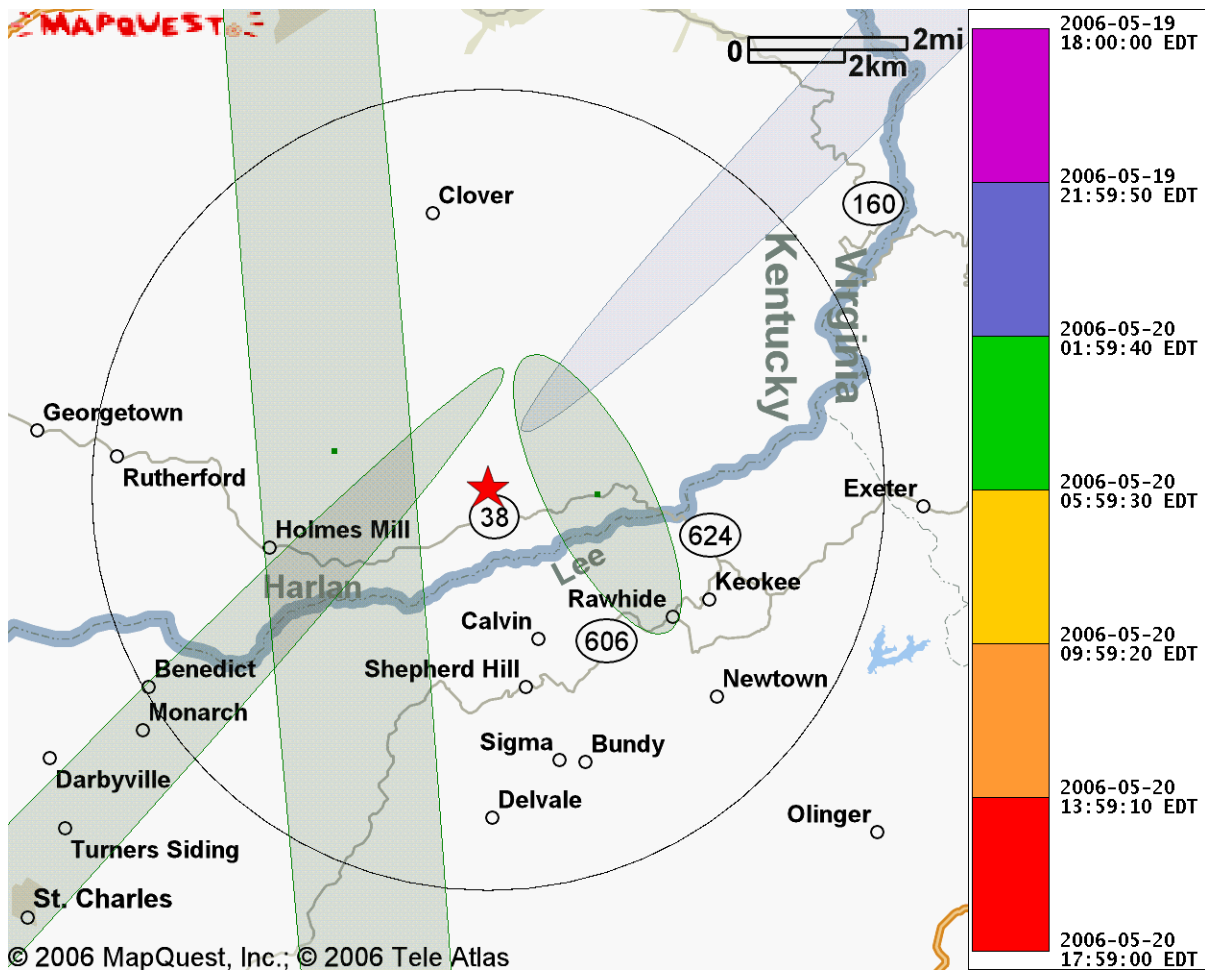
Lightning Strokes Detected within 5 mi/8 km radius: 2

Lightning Strokes Detected beyond 5 mi/8 km whose confidence ellipse overlaps the radius: 2

Search Radius: 5 mi/8 km

Time Span: May 19 2006 6:00:00 PM US/Eastern to May 20 2006 5:59:00 PM US/Eastern

### Confidence Ellipses For Lightning Strokes



Lightning data provided by Vaisala's NLDN® and/or Environment Canada's CLDN. Note: These ellipses indicate a 99% certainty that the recorded lightning event contacted the ground within the bounds of the ellipse.

## STRIKEnet Report 162412

Area Of Study With Center Point



## STRIKEnet Report 162412

Report Title: [Holmes Mill, KY](#)

Total Lightning Strokes Detected: 4

Lightning Strokes Detected within 5 mi/8 km radius: 2

Lightning Strokes Detected beyond 5 mi/8 km whose confidence ellipse overlaps the radius: 2

Search Radius: 5 mi/8 km

Time Span: [May 19 2006 6:00:00 PM US/Eastern](#) to [May 20 2006 5:59:00 PM US/Eastern](#)

### Lightning Stroke Table (Note: All events shown. Events ordered by time.)

Date	Time	Peak Current (kA)	Distance From Center (mi/km)	Latitude	Longitude
May 19, 2006	11:33:55 PM	-5.1	12.5/20.2	37.0102	-82.7961
May 20, 2006	3:02:25 AM	-4.7	12.0/19.3	36.7621	-83.1136
May 20, 2006	3:31:17 AM	-6.0	2.0/3.2	36.8856	-82.9877
May 20, 2006	3:38:28 AM	-7.9	1.4/2.2	36.8777	-82.9279

## STRIKE<sup>®</sup>net Report 162412

Report Title: **Holmes Mill, KY**

Total Lightning Strokes Detected: **4**

Lightning Strokes Detected within 5 mi/8 km radius: **2**

Lightning Strokes Detected beyond 5 mi/8 km whose confidence ellipse overlaps the radius: **2**

Search Radius: **5 mi/8 km**

Time Span: **May 19 2006 6:00:00 PM US/Eastern to May 20 2006 5:59:00 PM US/Eastern**

Lightning Stroke Table (Note: All events shown. Events ordered by distance.)

Date	Time	Peak Current (kA)	Distance From Center (mi/km)	Latitude	Longitude
May 20, 2006	3:38:28 AM	-7.9	1.4/2.2	36.8777	-82.9279
May 20, 2006	3:31:17 AM	-6.0	2.0/3.2	36.8856	-82.9877
May 20, 2006	3:02:25 AM	-4.7	12.0/19.3	36.7621	-83.1136
May 19, 2006	11:33:55 PM	-5.1	12.5/20.2	37.0102	-82.7961