

# Courses for MSHA and the Mining Industry



U.S. Department of Labor  
Mine Safety and Health Administration  
National Mine Health and Safety Academy

FY 2017



Dedicated to the Health and Safety  
of the Nation's Miners

Visit the Mine Safety and Health Administration  
at [www.msha.gov](http://www.msha.gov)

# Contents

## Page

Courses and Seminars/Workshops by Topic.....	iii
Welcome.....	1
History .....	2
The Academy's Purpose and Goal .....	2
Academy Organization .....	3
Academic Programs .....	9
Academic Life .....	11
Student Life .....	13
Fees and Billing .....	15
Travel to the Academy .....	17
Training Courses .....	19
Metal/Nonmetal Inspection Courses	
Journeyman Training .....	21
Metal/Nonmetal Mine Safety and Health	
Inspectors Retraining.....	35
Metal/Nonmetal Entry Level Mine Safety and	
Health Inspectors Training.....	41
Coal Inspection Courses	
Journeyman Training .....	43
Coal Mine Safety and Health Inspectors	
Retraining .....	67
Coal Entry Level Mine Safety and Health	
Inspectors Training .....	69
Computer Training Schedule .....	75
Certification and Qualification Courses .....	81
General Courses for MSHA and the	
Mining Industry .....	89

Seminars/Workshops for MSHA and the Mining Industry .....	112
Technical Specialists Training.....	119
Courses and Seminars/Workshops - Alphabetically .....	122
Schedule of Academy Events By Date .....	125
Suggestion Form for New Courses .....	133
Enrollment Form .....	135
Other Available Catalogs .....	137

## **Courses and Seminars/Workshops By Topic**

**Page**

### **Accident Prevention and Investigation Courses**

Accident Prevention Techniques .....	90
Mine Accident Investigation and Report Writing.....	31, 55
Mine Accident Investigation Techniques.....	101
Workplace Examinations .....	66, 111

### **Certification/Qualification Courses**

Annual Retraining for Impoundment Qualification .....	82
Continuous Personal Dust Monitor (CPDM) Maintenance and Calibration Certification.....	83
Continuous Personal Dust Monitor (CPDM) Sampling Certification.....	84
Qualification for Impoundment Inspection .....	86
Respirable Coal Mine Dust Sampler Calibration/Maintenance Certification.....	87
Respirable Coal Mine Dust Sampling Certification.....	88

### **Computer Courses**

Inspector's Portable Applications for Laptops (IPAL) Review	
Coal .....	52
Metal/Nonmetal .....	29
Microsoft® Excel 2010 – Basic.....	76
Microsoft® Excel 2010 – Intermediate.....	77
Microsoft® Excel 2010 – Advanced.....	78
Microsoft® PowerPoint 2010 .....	79
Microsoft® Word 2010 .....	80

## Electrical Courses

Electrical Hazards.....	24
Electrical Safety for Coal Miners .....	47, 91
Electrical Safety for Metal/Nonmetal Miners.....	92
Underground Electrical Circuit Protection Overview.....	64

## Industrial Hygiene Courses

Hazard Communication (HazCom).....	94
Industrial Hygiene.....	51
Industrial Hygiene: Sampling for Respirable Silica Dust and Noise .....	95
Intermediate Toxicology.....	97
Noise Hazards, Regulation, and Control .....	59, 108

## Instructor Courses

Instructor Training Workshop (Part 48).....	96
---	----

## Mine Rescue Training Courses

Mine Rescue Training.....	105
Mine Rescue Visio Mapping and Map Scoring Training.....	106

## Mine Safety Courses

Atmospheric Monitoring System (AMS) with Emphasis on Fire Protection .....	45
Blasting (Surface) (Coal) .....	46
Blasting (Surface) (MNM).....	23
First Aid/ CPR/ AED Usage .....	25, 48, 85, 93
Ground Control Hazards (MNM).....	27
Haulage (Surface) (Coal).....	50
Haulage (Surface) (MNM) .....	28
Introduction to Mining .....	98

	<b>Page</b>
Law/Regulation/Policy, Citation/Order Writing, Inspection Procedures.....	99
Longwall Mining and Inspection Procedures .....	53
Marshall University Masters of Safety Degree (Emphasis in Mine Safety).....	30, 54, 100
Mine Construction, Maintenance, and Repairs Safety .....	102
Mine Explosion Prevention .....	56, 103
Mine Hoist and Elevator Inspection Program Training.....	32, 57, 104
Mine Ventilation .....	58, 107
Off Road Tire Safety .....	109
Roof Control Seminar .....	60, 116
Slope and Shaft Sinking Safety .....	61
Surface Facilities and Coal Preparation .....	62, 110
Tailings Dam and Waste Pile Inspection – Metal/Nonmetal .....	33
Underground Diesel Equipment/Ventilation.....	63
Underground Haulage, Transportation, and Machinery (Coal) .....	65
Underground Ventilation for Metal/ Nonmetal Mines.....	34

## **Seminars/Workshops**

Blasting Seminar .....	113
First Responder Safety/Mine Site Emergencies Workshop .....	26, 49, 114
Mine Construction, Maintenance, and Repairs Safety Workshop.....	115
Roof Control Seminar .....	60, 116
Surface Haulage Workshop.....	117
TRAM/National Mine Instructors Seminar .....	118





## Welcome

Welcome to the 2017 edition of Courses for MSHA and the Mining Industry.

Our Nation's mines produce more material than ever before. Sophisticated machinery and equipment allow miners to work in areas that are often complex and dangerous. Mining technology is always changing and every mine is unique. The mining industry is constantly in need of new miners. Most of these miners are inexperienced and must be trained prior to employment. This is why (1) Mine Safety and Health Inspections, (2) Technical and Engineering Assistance, and (3) Education and Training are important elements in ensuring a safe workplace. These are the three elements of MSHA's triangle of success.

Up-to-date and practical health and safety training is vital since mining occurs in a hazardous, ever-changing environment where there is little room for error.

The National Mine Health and Safety Academy, in Beaver, West Virginia, is the world's largest institution devoted to health and safety in mining. It is a central training facility for Federal mine safety and health inspectors, mine safety professionals, other government agencies, the mining industry, and labor.

Most of the Academy's courses are open to participants from throughout the mining community. Classes are taught by Academy faculty and associate instructors and specialists from the mining industry, trade associations, colleges and universities, manufacturers, and other government agencies.

Whatever your interest in mine health and safety, you will find useful and practical training at the National Mine Health and Safety Academy.

## History

Protecting those who work in our Nation's mines requires an awareness and understanding of the conditions that endanger their health and safety.

This problem was recognized more than 140 years ago when a proposal for a Federal mining bureau was submitted to Congress. It was not until nearly five decades later that a series of deadly mine explosions led to passage of the Organic Act of 1910. That act created the Bureau of Mines.

Laws passed over the next 60 years enlarged the scope of legislation aimed at reducing mining hazards. The Federal Coal Mine Health and Safety Act of 1969 contained provisions for the training of Federal mine safety and health inspectors, as well as establishing education and training for states, mine operators, and miners. The Federal Mine Health and Safety Act of 1977 broadened these provisions to include metal and nonmetal mining. The National Mine Health and Safety Academy supports the requirements of the 1977 Act, and the newly enacted Mine Improvement and New Emergency Response Act of 2006.

## The Academy's Purpose and Goal

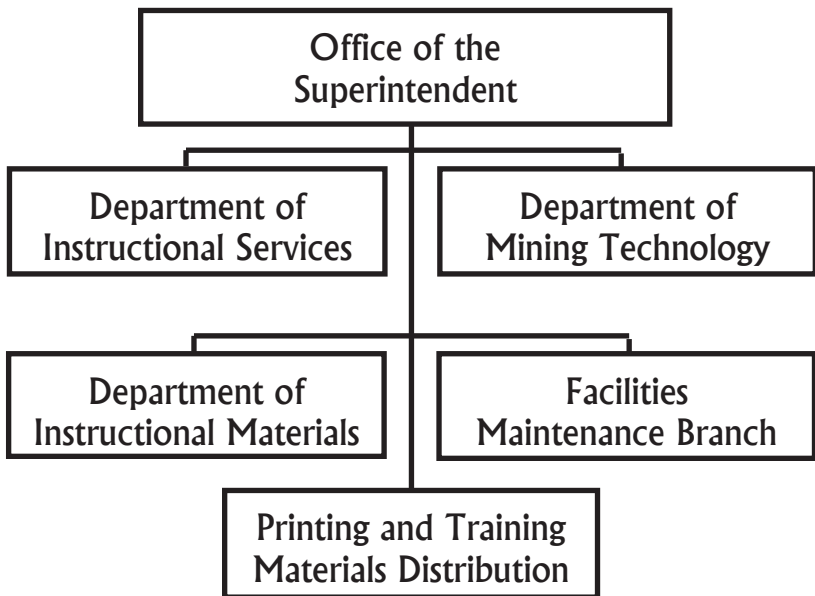
The purpose of the Academy is to design, develop, and conduct instructional programs that will assist in government, industry, and labor efforts to reduce injuries, illnesses, and fatalities in the mineral industries.

All of our programs, seminars, and courses are prepared with one idea in mind – to improve health and safety conditions in mines through education and training. This is our goal. Our success will be measured by the extent to which mine accidents and unhealthful conditions are reduced in future years.

## Academy Organization

The National Mine Health and Safety Academy is supported by the Superintendent of the Academy with the help of five major units:

- ◆ Department of Instructional Services
- ◆ Department of Mining Technology
- ◆ Department of Instructional Materials
- ◆ Facilities Maintenance
- ◆ Printing and Training Materials Distribution



The **Office of the Superintendent** is responsible for the immediate management and direction of the Academy and for coordination of all training programs, and management of all printing, storing, distributing Academy training products and MSHA informational products.

The **Department of Instructional Services** manages the work activities and resources assigned to the Department in the following areas: (1) developing and teaching courses for

MSHA and the mining industry in safety management, accident investigation and report writing, citations and orders, and inspection automation, (2) planning, scheduling, and evaluating instructional programs, workshops, conferences, and seminars for MSHA and the mining industry, (3) developing and teaching computer courses for MSHA mine inspection and administrative and clerical personnel, (4) scheduling MSHA entry level programs and preparing records of student progress, (5) converting existing courses and working with instructors to develop new courses that can be presented online and in other distance formats, (6) housekeeping, and student registration.

The Technical Information Center and Library is part of the Instructional Services Department. The library maintains books, journals, newspapers, technical reports, audiovisual materials, and other information related to mine health and safety. The library gives Academy students and clients immediate and easy access to information sources that can improve the health and safety of miners worldwide.

The **Department of Mining Technology** manages the work activities and resources assigned to the Department in the following areas: (1) developing and teaching courses for MSHA and the mining industry in technical mine safety and health, (2) planning, scheduling, and evaluating instructional programs, workshops, conferences, and seminars for MSHA and the mining industry, (3) planning, scheduling, and coordinating the activities conducted in the Mine Simulation Laboratory, (4) overseeing the on-the-job training program for entry level mine inspectors.

The **Department of Instructional Materials** manages the work activities and resources assigned to the Department in the following areas: (1) developing training and informational publications for MSHA and the mining industry, (2) developing and teaching courses for MSHA and the mining industry, (3) developing audiovisual materials to support MSHA and industry training, and (4) producing graphics materials in support of Agency initiatives and training. (5) developing online training material.

**Facilities Maintenance Services** aids all Academy programs through coordination of student services, scheduling, recordkeeping, physical plant maintenance, budget and procurement, wellness, contract administration, food service, security, and audiovisual support.

## **The Academy Campus**

The Academy complex includes classrooms and laboratories to accommodate 600 students and the Residence Hall has 174 lodging rooms.

The **Classroom Building** includes 18 classrooms and 10 laboratories.

The **Distance Learning Lab** will provide remote training at sites throughout the nation.

The **Technical Information Center and Library** is in the Classroom Building.

The **Administration Building** contains faculty and staff offices, the auditorium, cafeteria, and student store.

The **Electrical Laboratory** gives students an opportunity for hands-on health and safety training on different mining machinery and electrical systems.

The **Mine Simulation Laboratory** is an aboveground simulated mine. Here, students can learn about mine ventilation, mine rescue, mine emergency preparedness, and firefighting.

The **Mine Emergency Building** is adjacent to the Mine Simulation Laboratory. It houses mine emergency vehicles and a mine rescue station for MSHA's Mine Emergency Units.

The **Gymnasium** is available for wellness training and leisure time activities. Other wellness facilities at the Academy include tennis courts, a racquetball court, swimming pool, jogging trail, and athletic field.

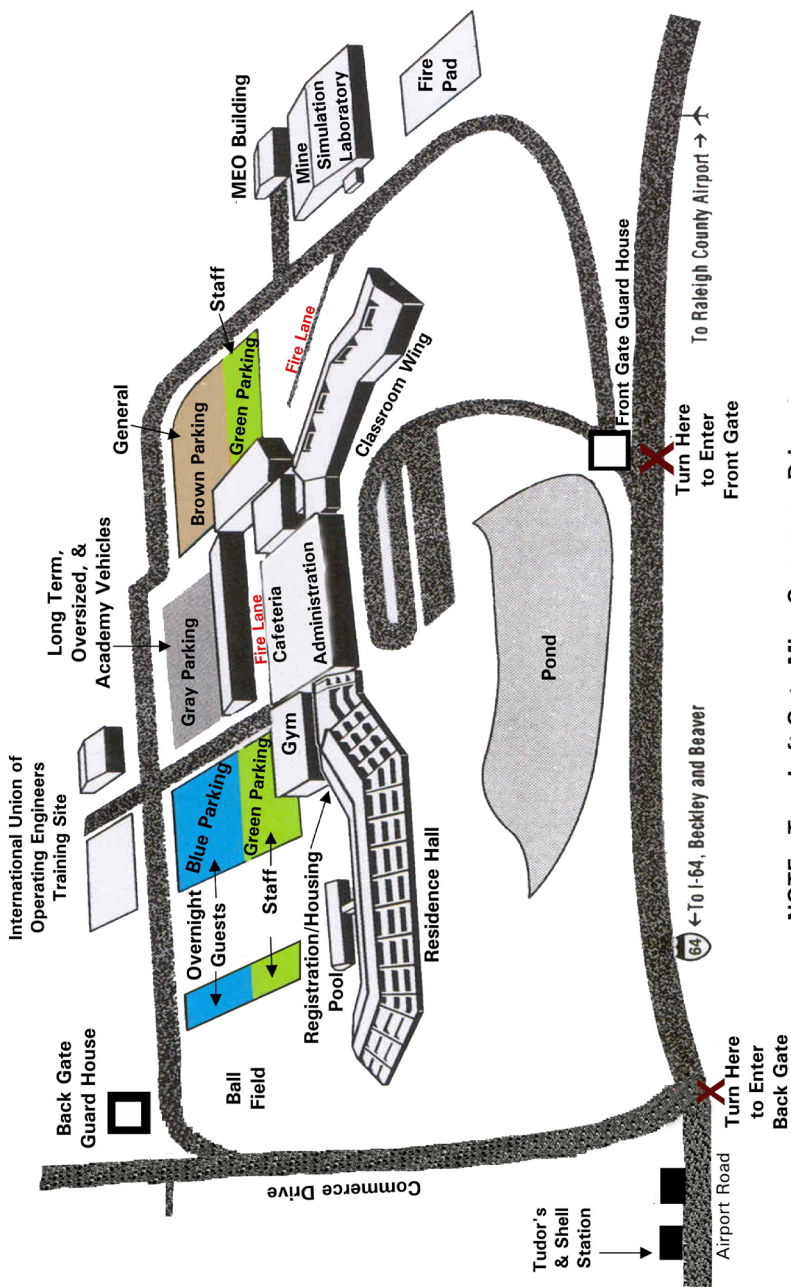
The **Maintenance and Equipment Building** is used to maintain Academy equipment.

The **Publications Distribution Center** houses the print shop, supply and warehouse facilities, and the Department of Instructional Materials.

The **Residence Hall** has 174 units. Each room in the residence hall has a queen-size bed, a private bath, television, telephone, desk, storage area, refrigerator, coffee pot, and iron and ironing board.

## Security

Upon your arrival at the Academy you will need to stop at the main gate. Uniformed security personnel are on duty at all times. Personal photo identification must be presented at the entry gates, and be displayed and worn while at the Academy. Additionally, security guards will issue you a color coded parking permit. Display this card on your vehicle dashboard and park in the area designated on the permit.







## Academic Programs

### MSHA Training

All newly hired MSHA mine safety and health inspectors receive entry-level training. This training covers technical aspects of mine inspection and additional topics such as effective communications and professionalism.

Entry-level coal mine safety and health inspectors receive six modules of instruction (21 weeks total) at the Academy in conjunction with required web-based training and on-the-job training (OJT) sessions in the field.

Entry-level metal/nonmetal mine safety and health inspectors training includes six modules of instruction (21 weeks total) at the Academy in conjunction with required web-based training and OJT sessions in the field.

Journeyman training presents up-to-date technical and regulatory information to journeyman mine safety and health inspectors to help them ensure that the mining community is served most effectively. The Academy also presents courses to provide journeymen with more in-depth training on special subjects.

Technical Specialists receive training in a variety of subjects so that they remain informed regarding current technical and regulatory information.

The Academy offers computer training on various software applications to MSHA personnel and others from the mining industry and other government agencies.

## Training for Industry

All Academy courses are open to participants from throughout the mining community. These programs are taught by Academy and visiting outside instructors and specialists from the mining industry, trade associations, colleges and universities, manufacturers, and other government agencies. Seminars, workshops, and conferences are offered during the year, both at the Academy and at sites throughout the country.

Many courses provide certification or qualification to persons who take mandated examinations.

Examples of other courses available to the industry are Electrical Safety for Miners, Hoists and Elevators, Instructor Training Workshop (Part 48), Construction and Repairs Safety, Mine Elevator Inspection Program Training, Noise Hazards, Regulation and Control, and Surface Facilities and Coal Preparation. In addition, the Academy will frequently furnish additional courses to the industry and interested participants if valid requests are made.

Training activities in the Mine Simulation Laboratory cover mine rescue, firefighting, mine emergency response, simulated inspections, ventilation, roof control, haulage, annual refresher subjects, supervisory training, and mine examination. Students come from MSHA, other Federal and state agencies, industry, labor organizations, and international mining delegations.

## **Academic Life**

### **Class Attendance**

Classes are informal and while dress is casual, it should remain professional in nature (no shorts or flip flops). Most of our laboratory classes include hands-on activities or outside fieldwork. Due to the proximity of heavy equipment, shorts and flip flops are not authorized wear for Academy classes.

A typical class day begins at 8:00 a.m. and ends at 4:00 p.m. All other day classes end by 5:00 p.m., unless otherwise scheduled.

Absences from class are approved for personal illnesses, emergencies, or death in a student's family. Students notify their supervisor and instructors, and make up work assigned while absent.

### **Grading System**

The Academy uses a grading system for entry-level (coal and metal/nonmetal) courses of study and gives examinations in these classes. These grades are recorded, and students are informed of their progress through periodic grade reports.

### **Units of Credit/Certificates of Participation**

Students receive Continuing Education Units (CEUs) upon completion of an Academy program. One CEU is 10 contact hours of participation in an educational experience. The Academy does not grant degrees, but CEUs may be converted into hours of credit at other institutions.

Students who satisfy the Academy criteria for successful completion of any course of study receive a Certificate of Completion documenting the course title, date, and CEUs.

## College Credit for Academy Courses

Mine safety and health inspectors can earn an **Associate of Applied Science Degree in Occupational Development: Mine Inspection** from the Mountwest Community and Technical College (MCTC), Huntington, West Virginia. This program is a cooperative effort among MSHA, the National Council of Field Labor Locals, the U.S. Department of Labor's Bureau of Apprenticeship and Training, and the university. MCTC will award 43 credit hours to students who complete the equivalent of the mine inspector apprentice requirements. These credits are applied to successful completion of the classroom and on-the-job training parts of Entry Level Mine Inspector training. An additional 22 hours of general education credits are also required.

## Academic Dishonesty

The student can be disciplined or dismissed from the Academy for cheating, dishonesty, plagiarism, or knowingly furnishing false information to the Academy.

## Withdrawal

The student may withdraw from an Academy program without penalty because of injury or other extenuating circumstances. If you withdraw, you will not receive credit for the courses of study in which you were enrolled.

## Transcripts

You may request (in writing) a copy of your academic record. Your request must include your full name and complete address. Submit your request to:

National Mine Health and Safety Academy  
Student Services Branch  
1301 Airport Road  
Beaver, West Virginia 25813-9426  
FAX: (304) 256-3251

## **Student Life**

### **Food Service and Student Store**

Academy food service offers complete meals in a cafeteria setting. You may choose from a selection of freshly prepared entrees and desserts with a full range of beverages available to complement your meal. There is also a made-to-order deli and a salad bar. Heart-healthy and vegetarian selections are also available. Food service personnel can assist anyone who has special dietary needs. If you are an MSHA employee, you will receive a meal card when you check in. Present this card to the cashier upon entering the cafeteria serving line. Non-MSHA students who are in residence must pay for lodging and meals.

The student store, located next to the cafeteria, has a wide variety of sundries, souvenirs, and gifts.

The food service and student store accept all major credit cards.

### **For Your Health and Safety**

Please observe all posted speed limits and all traffic and parking signs.

If you need emergency medical attention, please dial ext. 555 or "0" and request medical assistance. Academy personnel will take you to a medical facility in an Academy vehicle or arrange for an ambulance. If there is no answer, dial 9-911 (Raleigh County Emergency Operations Center) and request medical assistance.

Assistance in completing accident health insurance claim forms for Federal students may be obtained from your class coordinator or a responsible staff person on duty after normal duty hours.

You play an important part in accident prevention at the Academy. Should you see an actual or potential safety hazard, please report it to an instructor, class coordinator, or any Academy staff person.

Pets of any kind are prohibited on all Academy grounds, except for certified service animals accompanying people with impairments.

## **Mail**

You can send or receive mail (Monday through Friday) at the Residence Hall registration desk. Our mailing address is:

National Mine Health and Safety Academy  
1301 Airport Road  
Beaver, WV 25813-9426

## **Vehicles**

Students are required to register vehicles with security personnel at the main entrance to Academy grounds. You will receive a color-coded parking permit that allows you to park in a designated area. There is ample and well-lighted parking at the Academy.

## Fees and Billing

*All Academy fees are reviewed periodically and subject to change.*

### Tuition

The Academy will charge tuition fees to all persons attending Academy courses, except employees of Federal, State, or local governments, persons attending the Academy under a program supported through an MSHA State grant, and persons performing a direct service.

The tuition amount indicated by the course announcement is due on arrival by check, money order, or credit card (VISA and MasterCard) payable to MSHA Finance. We regret that **we cannot accept cash**. Billing is possible with a written request to the Academy's Student Services Branch two weeks in advance. If tuition is submitted in advance, written notification of withdrawal to the Student Services Branch is required to process a full refund.

Any company or organization requesting a course to be presented at their worksite will be required to pay the tuition fee of \$84.00 per day for each person and travel expenses for the MSHA instructor.

### Lodging

All persons in residence at the Academy, except MSHA personnel, other persons performing a direct service for MSHA, and persons attending a program supported through an MSHA State Grant, are charged for lodging. Lodging is only permitted for MSHA employees who are attending a course, event or on official business.

The lodging fee is \$45.00 per day for an individual and is due on arrival by credit card (VISA and MasterCard) or check/money

order payable to MSHA Finance. We regret that **we cannot accept cash**. Billing is possible with a written request to the Student Services Branch.

Persons staying at the Academy may have their spouses and immediate family as guests provided all appropriate fees are paid on arrival. The fee for spouses and children 18 years of age and older is \$15.00. Children under the age of 18 are free and must be accompanied by an adult at all times. Advance reservations are required.

If you have special needs, please contact Student Services before your arrival.

## Meals

Participants who pay for Academy lodging may register for meals when they check in. Students staying in the Residence Hall are normally required to purchase a meal ticket for breakfast and lunch at the Academy. Dinner is optional. Prices are:

Breakfast	\$12.00
Lunch	\$15.50
Dinner	\$15.50

Participants paying for their meals in the cafeteria may do so by cash, major credit card, or check/money order payable to Xcel Management Solutions, LLC.



## Travel to the Academy

Located on a plateau in southern West Virginia, the Academy blends into its Appalachian mountain setting. Scenic vistas and wildlife greet travelers to the Academy, and students experience a restful environment.

Several travel options are available:

### By Air

**Beckley, West Virginia** – The Raleigh County Memorial Airport is located 1 mile from the Academy.

**Charleston, West Virginia** – The Yeager Airport is located 65 miles north of the Academy. Rental cars are available.

**Lewisburg, West Virginia** – The Greenbrier Valley Airport is located 47 miles east of the Academy. Rental cars, taxis, and limousines are available.

### By Train

**AMTRAK** provides tri-weekly service to and from Prince, West Virginia – located 16 miles from the Academy. Taxi service meets all trains.

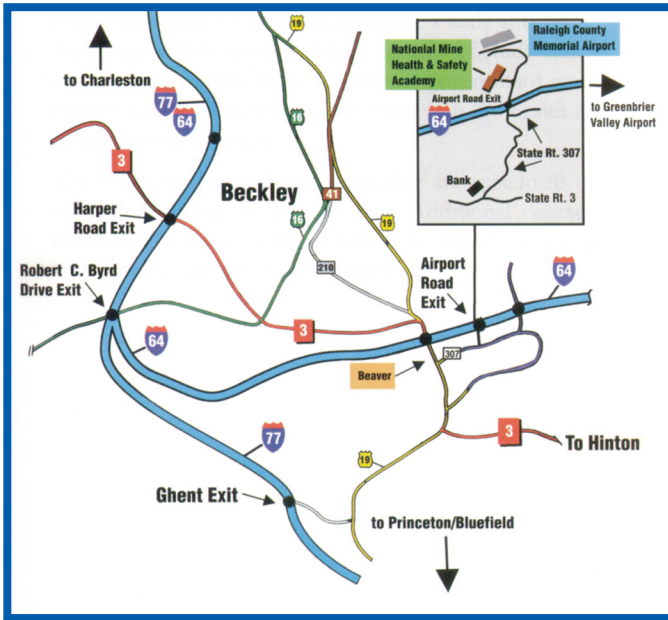
### By Bus

Daily **Greyhound** service is available to and from Beckley – located 8 miles from the Academy in downtown Beckley. Taxi service is available.

### By Car

See **Route Map** to the Academy on page 18.

## Route Map to the Academy



### Arriving from the NORTH

- » When using U.S. 19 South, go to and follow I-77 South, exit at I-64 East
- » Follow I-64 to EXIT 125B, Airport Road
- » Academy is 1 mile on left

### Arriving from the EAST

- » When using I-64 West, use Exit 125, Beaver/Airport Road
- » Turn RIGHT at bottom of ramp
- » Academy is 1 mile on left

### Arriving from the SOUTH

- » When using I-77 North, exit and follow I-64 East
- » Use EXIT 125B, Airport Road
- » Academy is 1 mile on left

### Arriving from the WEST

- » When using I-64 East, use Exit 125B, Airport Road
- » Academy is 1 mile on left

## Training Courses

The National Mine Health and Safety Academy develops and presents courses of study which cover a wide spectrum of mine health and safety subjects. These courses of study address training needs of miners, mine safety and health inspectors, government and industry personnel, and others concerned with the health and safety of our Nation's miners.

The courses described in this catalog are scheduled or can be scheduled during the coming year. Additional courses can be scheduled to meet specific needs of miners, mine operators, and mine health and safety specialists.

Please contact Student Services at (304) 256-3252 if you are interested in attending any course listed as "Scheduled Upon Request." A list of students requesting the course will be maintained by that office until a sufficient interest is received. All students will then be notified and a date will be established to hold the training.



## Metal/Nonmetal Inspection Courses Journeyman Training

All metal and nonmetal mine safety and health inspectors will attend one week of training per year, or two weeks every other year. The training will be in a seminar format with subjects in various specialty areas. A list of dates is on page 35.

The additional courses described in this section are designed for journeyman metal and nonmetal mine safety and health inspectors and Federal, state, mining industry, and labor organization personnel.

Course dates are given at the bottom of the course description.

**Scheduling  
at Worksite  
Available  
Upon Request**

Courses marked by this icon may be held at your worksite. The course will be offered upon request with a minimum of 10 attendees. If your company or organization would like any of these courses presented onsite, contact Cheryl Stevens at (304) 256-3236. The course will then be scheduled.

Any company or organization requesting a course to be presented at their worksite will be required to pay the tuition fee of \$84.00 per day for each person and travel expenses for the MSHA instructor.

QUESTIONS?

If you need more information about contents of a course, contact the technical coordinator for that course at (304) 256-3100 or Cheryl Stevens at (304) 256-3236.

# TO ENROLL CONTACT:

National Mine Health and Safety Academy  
Student Services Branch  
1301 Airport Road  
Beaver, West Virginia 25813-9426

TELEPHONE: (304) 256-3252  
FAX: (304) 256-3251

## **BLASTING (SURFACE) (MNM)**

[EX316M]

Scheduling  
at Worksite  
Available  
Upon Request

This course discusses the characteristics and use of explosives and blasting agents. It is designed to teach blasting standards in accordance with Institute Makers of Explosives (IME) guidelines and the Code of Federal Regulations (30 CFR). The course is structured for MSHA metal/nonmetal safety and health inspectors and industry personnel.

### **Contents:**

- ◆ Definitions
- ◆ Transportation and Storage of Explosives and Blasting Agents
- ◆ Detonation Units
- ◆ Misfires
- ◆ Electric and Nonelectric Blasting Operations
- ◆ Explosives Hazards and Accidents
- ◆ Safe Blasting Principles (Work Procedures and Blast Plans)
- ◆ Initiation Systems

<b>Technical Coordinator:</b>	<b>Roger Montali</b>
<b>Course Length:</b>	<b>3 days</b>
<b>Tuition:</b>	<b>\$252.00</b>
<b>Dates:</b>	<b><i>Offered at worksite only with a minimum of 10 attendees</i></b>

## ELECTRICAL HAZARDS

[EL301M]

Scheduling  
at Worksite  
Available  
Upon Request

This course is designed to provide practical methods and techniques to identify electrical hazards and the appropriate enforcement actions to be taken. This course is for MSHA metal/nonmetal inspection personnel with little or no electrical expertise.

### Contents:

- ◆ Basic Electrical Theory
- ◆ Basic Circuitry
- ◆ Grounding
- ◆ Power Distribution Systems
- ◆ Inspection of Electrical Equipment
- ◆ Regulations and Policies
- ◆ Hazard Recognition
- ◆ Citations and Orders
- ◆ Personal Safety

**NOTE: This course is not for Electrical Specialists.**

**Technical Coordinators:** Randy Smith  
Cliff Adkins

**Course Length:** 3 days

**Tuition:** \$252.00

**Dates:** *Scheduled upon request with  
a minimum of 10 attendees,  
maximum of 16*



## FIRST AID/ CPR/ AED USAGE

[SF700G]

Scheduling  
at Worksite  
Available  
Upon Request

Students who successfully complete this course will receive National Safety Council (NSC) Certification.

### Content will include but not limited to:

- ◆ Basic Life Support (Adult)
- ◆ CPR
- ◆ AED Usage
- ◆ Acting in an Emergency
- ◆ Heart Attack and Chest Pain
- ◆ Bleeding
- ◆ Sudden Illness

<b>Technical Coordinator:</b>	<b>Bret Park</b>
<b>Course Length:</b>	<b>1 day</b>
<b>Tuition:</b>	<b>\$84.00</b>
<b>Dates:</b>	<b><i>Scheduled upon request with a minimum of 10 attendees</i></b>

# FIRST RESPONDER SAFETY / MINE SITE EMERGENCIES WORKSHOP

[GS600G]

Scheduling  
at Worksite  
Available  
Upon Request

This is a one-day workshop designed to provide MSHA personnel, the mining industry, miners' representatives, firefighters, law enforcement personnel and emergency medical personnel with information and precautions that should be taken before or while responding to an emergency at surface mines, surface areas of underground mines, and surface mining facilities.

## Contents:

- ◆ Emergency Response Planning
- ◆ Large Haul Truck and Equipment Fires
- ◆ Structures In and Around Surface Facilities
- ◆ Use of Mine Equipment for Rescue & Fire Fighting
- ◆ Traffic Control on Surface Mine Roadways
- ◆ First Responder Vehicle Maintenance (Brakes & Steering)
- ◆ National Incident Management System (NIMS) Overview

## Surface Mine Hazards Addressed:

- ◆ Explosives Storage
- ◆ Surge Pile Safety
- ◆ Draw-off Tunnels
- ◆ Fuel Storage (stationary and mobile)
- ◆ Belt Conveyor and Travelway Safety
- ◆ Electricity
- ◆ Preparation Plants and Mills
- ◆ Off Road Haul Trucks and End Loaders
- ◆ Highwall Safety and Highwall Mining Machines
- ◆ Chemicals and Gases Common to Mines and Facilities
- ◆ Surface Areas of Underground Mines

**Technical Coordinator:** Johnnie Tyler

**Course Length:** 1 day

**Tuition:** None

**Dates:** *Scheduled upon request with  
a minimum of 10 attendees*

## GROUND CONTROL HAZARDS

[RC301M]

Scheduling  
at Worksite  
Available  
Upon Request

This course will focus on the Code of Federal Regulations (30 CFR) requirements related to ground control at surface and underground metal and nonmetal mines. The course provides techniques for the recognition and correction of ground control hazards.

### Contents:

- ◆ Highwalls
- ◆ Stockpiles
- ◆ Basic Geology
- ◆ Rock Fixtures
- ◆ Surface Structures
- ◆ Underground Support
- ◆ Hazard Recognition
- ◆ Compliance Determination

**Technical Coordinator:** Johnnie Tyler

**Course Length:** 3 days

**Tuition:** \$252.00

**Dates:** *Scheduled upon request with  
a minimum of 10 attendees*

## HAULAGE (SURFACE) (MNM)

[HL301M]

Scheduling  
at Worksite  
Available  
Upon Request

Haulage accidents have been one of the leading causes of fatal accidents for several years at our Nation's surface mines. This course teaches how to recognize the hazards that may exist in surface haulage.

### Contents:

- ◆ Compliance Determination of 30 CFR Parts 56/57.9000 and 56/57.14000
- ◆ Inspection Procedures for Surface Mining Equipment
- ◆ Use of Signs and Traffic Control on Mine Property
- ◆ Haul Road Design
- ◆ Brake Systems
- ◆ New Technology (Video Cameras)
- ◆ Rollover Protective Structures (ROPS)
- ◆ Falling Object Protective Structures (FOPS)
- ◆ Tire and Rim Safety
- ◆ Overview of Fatal Accidents

**Technical Coordinators:** Johnnie Tyler  
Roger Montali

**Course Length:** 3 days

**Tuition:** \$252.00

**Dates:** *Scheduled upon request with  
a minimum of 10 attendees*

## **INSPECTOR'S PORTABLE APPLICATIONS FOR LAPTOPS (IPAL) REVIEW – METAL/ NONMETAL**

[CT307M]

***MSHA PERSONNEL ONLY***

Scheduling  
at Worksite  
Available  
Upon Request

The IPAL review course is designed for MSHA metal/ nonmetal mine safety and health inspectors. The course reviews the latest version of the IPAL Program. The course also covers the fundamentals of the computer operating system, troubleshooting, and how to use the computer to reference resource material stored in the computer.

### **Contents:**

- ◆ IPAL (Inspector's Portable Applications for Laptops)
- ◆ Reference Material (30 CFR, Mine Act, PPM, Policy Information Letters, and Program Information Bulletins)
- ◆ Basic Troubleshooting and Maintenance of the Laptop Computer and the IPAL Program
- ◆ Using Citrix Metaframe

**Technical Coordinators: Teresa Reynolds  
Vince Nicolau**

**Course Length: 2 days**

**Tuition: None**

**Dates: *Scheduled upon request***

## **MARSHALL UNIVERSITY MASTERS OF SAFETY DEGREE (EMPHASIS IN MINE SAFETY)**

**[NEMU003]**

Courses will be offered pursuant to the Masters of Safety Degree (Mining Emphasis) program offered by the Academy through Marshall University. Courses will be offered in a blended learning environment using distance learning technology. Online courses are also planned to be offered in the Spring, Summer, and Fall 2017 semesters. Marshall University offers courses online through Blackboard. This is available to any person enrolled as a Marshall University graduate student. It is extremely important that you be accepted into the program by Marshall University so that any computer issues that may arise can be resolved prior to beginning the course.

Students must be admitted into the program **prior** to course enrollment. Application for Graduate Admission forms may be obtained by calling Cheryl Stevens at (304) 256-3236 or by going online to [www.marshall.edu](http://www.marshall.edu). College Chemistry 203, Math 130 (college algebra), and Physics 101 or the equivalent are prerequisites for admission to this program, as is a minimum undergraduate GPA of 2.5 or being registered as a professional engineer, or scoring at the mean or above on one area of the General GRE.

Enrollment for these online classes will be limited to 25 students and is on a first come first serve basis. First priority will be given to students who have taken courses previously in pursuit of this degree; those persons successfully admitted into the program through Marshall University will be given next preference.

Tuition and other related fees will be determined and posted at a later date. For more information, contact Kevin Malay by email at [malay.kevin@dol.gov](mailto:malay.kevin@dol.gov) or at (304) 256-3539.

<b>Technical Coordinator:</b>	<b>Kevin Malay</b>
<b>Dates:</b>	<b>Fall 2016 Spring 2017 Summer 2017</b>

# MINE ACCIDENT INVESTIGATION AND REPORT WRITING

[IV301G]

## *MSHA PERSONNEL ONLY*

This course is for coal, metal/nonmetal, technical support, EPD, and other MSHA individuals involved in accident investigation. The course reviews basic guidelines, procedures, and techniques used to investigate and report on accidents and other incidents involving health and safety in the mining industry.

Classroom activities and discussions cover reasons for accident investigations, the investigative process, data collection, accident reconstruction, proper analysis for corrective actions, and completion of investigative reports following relevant MSHA guidelines and policies. At the conclusion of the class, in a practical exercise, students will conduct a simulated accident investigation and prepare a report. **Students should bring their laptop computers.**

**\*Due to cumulative nature of course material, if a student misses any portion of the class, he/she may be required to return to a subsequent class. Enforcement students must have completed entry-level inspector training at least one year prior to the class date.**

### **Contents:**

- ◆ Overview of Accident Investigation
- ◆ Pre-Investigation Activities
- ◆ Dealing with Family Members
- ◆ Accident Reconstruction
- ◆ Photography/Sketching
- ◆ Interviewing Techniques
- ◆ Data Collection and Evaluation
- ◆ Developing Conclusions and Corrective Actions
- ◆ Report Writing
- ◆ Determining Root Causes

**Technical Coordinator: David Elkins**

**Course Length: 8 days**

**Dates: Mar 14 - 23, 2017, May 9 - 18, 2017**

**July 11 - 20, 2017, Dec 5 - 14, 2017**

## **MINE HOIST AND ELEVATOR INSPECTION PROGRAM TRAINING [HS606G]**

**Scheduling  
at Worksite  
Available  
Upon Request**

This training module covers the inspection of mine hoist and elevators and the impact of the mine environment on critical hoist and elevator components. An emphasis will be made also on Mechanical Escape Facilities. It will enable the student to perform basic mine hoist and elevator inspections, focusing on critical safety concerns, including those identified in recent mine accidents. The material will be correlated to the applicable sections of 30 CFR, the ASME A17 Elevator Code, and a variety of information pertaining to wire ropes.

During the hands-on time, the student will be taught the proper way to measure a wire rope, when it is required, locations of measurements, and the “out of service” criteria for both wire ropes and their terminations. This course is for MSHA coal and metal/nonmetal mine safety and health inspectors and industry personnel.

### **Contents:**

- ◆ Wire Rope Technology
- ◆ Terminations and Attachments
- ◆ Removal Criteria According to 30 CFR
- ◆ A Review of the ASME A17 Elevator Code
- ◆ Hazard Recognition
- ◆ Inspection Procedure
- ◆ Citation and Order Writing

**Technical Coordinators:** **Cliff Adkins**  
**Randy Smith**

**Course Length:** **3 days**

**Tuition:** **\$252.00**

**Dates:** ***Scheduled upon request with a  
minimum of 10 attendees***



## TAILINGS DAM AND WASTE PILE INSPECTION – METAL/NONMETAL [IM301M]

Scheduling  
at Worksite  
Available  
Upon Request

This course will introduce the student to the general safety considerations for the design, construction, maintenance, and inspection of dams and waste piles.

### Contents:

- ◆ Typical Geotechnical Investigations
- ◆ Foundation Analysis
- ◆ Breakthrough Potential Analysis
- ◆ Stability Analysis and Safety Factors
- ◆ Hydrologic and Hydraulic Considerations
- ◆ Construction Monitoring
- ◆ Identification of Deficiencies
- ◆ General Methods of Remediation
- ◆ Applicable Regulations

**Technical Coordinators:** Jared Adkins  
Vince Nicolau

**Course Length:** 3 days

**Tuition:** \$252.00

**Dates:** *Scheduled upon request with  
a minimum of 10 attendees*

## UNDERGROUND VENTILATION FOR METAL AND NONMETAL MINES [VN303N]

Scheduling  
at Worksite  
Available  
Upon Request

This course is designed to assist metal/nonmetal miners in the recognition and evaluation of health hazards and effective ventilation methods to eliminate these hazards.

### Contents:

- ◆ Airborne Contaminants
- ◆ Sampling and Detecting Devices
- ◆ Confined Spaces
- ◆ Hazard Controls
- ◆ Mine Maps
- ◆ Recognition of Areas That May Have Poor Air Quality
- ◆ Measuring Air Quantities
- ◆ Review of Ventilation Regulations

Technical Coordinators: Jonah Pritt  
Terry Jude

Course Length: 2 days

Tuition: \$168.00

Dates: *Scheduled upon request with  
a minimum of 10 attendees*

## **Metal/Nonmetal Mine Safety and Health Inspectors Retraining**

**[LP311M] *MSHA PERSONNEL ONLY***

Metal and nonmetal mine safety and health inspectors are required to receive a minimum of 48 hours of training every two years. This is the first year of the current two-year training cycle for journeyman metal/nonmetal mine safety and health inspectors.

Listed below are the dates and training sessions that are scheduled at the Academy.

### **Bret Park, Coordinator Schedule**

October 24 - November 4, 2016

December 5 - 16, 2016

January 23 - February 3, 2017

February 27 - March 10, 2017

April 3 - 14, 2017

July 17 - 28, 2017

## **Metal/Nonmetal Entry Level Mine Safety and Health Inspectors Training**

The courses listed in this section are designed for entry level mine safety and health inspectors. However, they may be attended by other Federal, state, mining industry, and labor organization personnel.

Training dates are given with each module.

# NEED MORE INFO? CONTACT:

Cheryl Stevens  
Department of Instructional Services  
National Mine Health and Safety Academy  
1301 Airport Road  
Beaver, West Virginia 25813-9426  
TELEPHONE: (304) 256-3236  
FAX: (304) 256-3247  
E-MAIL: [stevens.cheryl@dol.gov](mailto:stevens.cheryl@dol.gov)

## **Metal/Nonmetal Curriculum** **(Modules I-VI) *MSHA PERSONNEL ONLY***

The following chart shows the required core courses for entry level mine safety and health inspectors.

Wellness training is scheduled for each module.  
Laptop computer and printer required for all modules.

## **MSHA PERSONNEL ONLY**

### **MODULE I (4 WEEKS)**

Orientation/Introduction  
to MSHA/DOL  
Inspection Procedures  
Introduction to Laptop  
Computers

Citations/Order Writing/  
Notetaking: Inspector's  
Portable Applications  
for Laptops (IPAL)

Law, Regulation and Policy  
Effective Citation Writing  
Communications

### **MODULE II (4 WEEKS)**

Mine Act - S/S & 104(d),  
Part 45 Contractors  
Training Requirements  
Parts 46 & 48

Jurisdictional Issues  
Interviewing Techniques  
Mine Electricity  
Communications

Accountability  
Courtroom Procedures  
Professionalism

### **MODULE III (4 WEEKS)**

Excavation & Trenching  
Safety  
Intro to Chemical Hazards  
Simulated Inspection

Retaining Dams  
Ground Control I  
Health I  
Accident Investigation

Scaffold Safety  
Surface Haulage I  
Cement Plant Process  
Slope & Shaft Sinking  
Inspection

### **MODULE IV (3 WEEKS)**

IPAL & C/O Review A  
Drilling and Blasting  
Fire Protection  
Articulating Trucks

Conference Presentation  
Preparation  
Conference Presentations

Mine Act 107(a), 103(g)  
Mine Rescue/Part 49  
Gas Detecting Devices

### **MODULE V (3 WEEKS)**

Health II  
Introduction to Special  
Investigations/  
Mine Act 105(c) 110(c)

Underground Ventilation  
Pressure Vessels & Boilers

Industrial Ventilation  
Haulage II/Cranes

### **MODULE VI (3 WEEKS)**

Electrical Review  
Hoisting  
Mine Act 103(f), 103(k),  
General Review

Permissibility  
Material Storage & Handling  
Ground Control  
Structural Safety

Part 50 Reporting & Auditing  
Maintenance & Repair  
Construction Safety

## **MNM Required Online Training**

### **Prior to Module I:**

- ◆ Rules to Live By I
- ◆ Rules to Live By II
- ◆ Orientation to the National Mine Health and Safety Academy
- ◆ Mine Act – Purpose of Agency
- ◆ Employee Health and Safety
- ◆ Standards of Conduct
- ◆ OJT Application for Entry Level Inspectors
- ◆ Wellness Part I

### **Prior to Module II:**

- ◆ Safety Talks
- ◆ Part 46
- ◆ Interviewing Techniques
- ◆ Courtroom Procedures
- ◆ Part 45 Contractors
- ◆ Part 48
- ◆ Jurisdictional Issues
- ◆ Mine Electricity
- ◆ Communications
- ◆ Professionalism

### **Prior to Module III:**

- ◆ Accident Investigation
- ◆ Behavioral Based Safety
- ◆ Root Cause Analysis
- ◆ Health I
- ◆ Hazard Communications
- ◆ Introduction to Chemical Hazards
- ◆ Slope and Shaft Sinking

Prior to Module IV:

- ◆ Mine Rescue/Part 49
- ◆ Fire Protection
- ◆ Mine Gases

Prior to Module V:

- ◆ Underground Ventilation
- ◆ Industrial Ventilation
- ◆ Gas Detecting Devices

Prior to Module VI:

- ◆ Structural Safety
- ◆ Tree Cutting
- ◆ Hoisting
- ◆ Part 50
- ◆ Electrical Permissibility
- ◆ Drug & Substance Abuse
- ◆ Technical Support Overview
- ◆ Unique Processes
- ◆ Employee Accident Reporting
- ◆ Wellness Part 2
- ◆ Safety Programs
- ◆ Personal Protective Equipment





# Metal/Nonmetal Entry Level Mine Safety and Health Inspectors Training *(Dates include travel days)* **MSHA PERSONNEL ONLY**

## **Group M37**

Module V	September 12, 2016 – October 7, 2016
Module VI	January 1, 2017 – February 3, 2017
Graduation	February 2, 2017

## **Group M38**

Module V	October 19, 2016 – November 4, 2016
Module VI	January 24, 2017 – February 9, 2017
Graduation	February 8, 2017

## **Group M39**

Module V	September 14, 2016 – September 30, 2016
Module VI	November 28, 2016 – December 15, 2016 (Thursday Departure)

## **Group M40**

Module IV	September 12, 2016 – October 7, 2016
Module V	November 28, 2016 – December 16, 2016
Module VI	February 1, 2017 – February 16, 2017 (Wednesday arrival)

## **Group M41**

Module IV	October 17, 2016 – November 4, 2016
Module V	January 23, 2017 – February 17, 2017
Module VI	April 23, 2017 – May 12, 2017 (Sunday arrival)

## **Group M42**

Module IV	January 23, 2017 – February 17, 2017
Module V	March 27, 2017 – April 14, 2017
Module VI	June 4, 2017 – June 23, 2017 (Sunday arrival)

### **Group M43**

Module II	October 17, 2016 – November 4, 2016
Module III	January 23, 2017 – February 17, 2017
Module IV	April 24, 2017 – May 12, 2017
Module V	July 9, 2017 – July 28, 2017 (Sunday arrival)
Module VI	September 17, 2017 – October 6, 2017 (Sunday arrival)

### **Group M44**

Module II	October 17, 2016 – November 10, 2016
Module III	January 30, 2017 – February 17, 2017
Module IV	May 1, 2017 – May 19, 2017
Module V	July 16, 2017 – August 4, 2017 (Sunday arrival)
Module VI	October 15, 2017 – November 3, 2017 (Sunday arrival)

## Coal Inspection Courses Journeyman Training

All journeyman coal mine safety and health inspectors will attend one week of training per year, or two weeks every other year. The training will be in a seminar format with subjects in various specialty areas. A list of dates and subjects can be found on pages 67 and 68.

The additional courses described in this section are designed for journeyman coal mine safety and health inspectors and other Federal, state, mining industry, and labor organization personnel.

Course dates are given at the bottom of the course description.

**Scheduling  
at Worksite  
Available  
Upon Request**

Courses marked by this icon may be held at your worksite. The course will be offered upon request with a minimum of 10 attendees. If your company or organization would like any of these courses presented onsite, contact Cheryl Stevens at (304) 256-3236. The course will then be scheduled.

Any company or organization requesting a course to be presented at their worksite will be required to pay the tuition fee of \$84.00 per day for each person and travel expenses for the MSHA instructor.

QUESTIONS?

If you need more information about contents of a course, contact the technical coordinator for that course at (304) 256-3100 or Cheryl Stevens at (304) 256-3236.

# TO ENROLL CONTACT:

National Mine Health and Safety Academy  
Student Services Branch  
1301 Airport Road  
Beaver, West Virginia 25813-9426

TELEPHONE: (304) 256-3252

FAX: (304) 256-3251

## **ATMOSPHERIC MONITORING SYSTEMS (AMS) WITH EMPHASIS ON FIRE PROTECTION**

[EL600G]

This course is designed to familiarize the student with the Safety Standards which apply to the Automatic Fire Sensor and Warning Device Systems also known as an Atmospheric Monitoring System, covered under 30 CFR 75.1103 and 30 CFR 75.351, and changes made under the Mine Improvement and New Emergency Response Act of 2006 (MINER Act). A hands-on session will be held at the Mine Simulation Lab to give the student a practical understanding of the system.

### **Contents:**

- ◆ MSHA Handbook on AMS Inspection Procedures, Provided by the Instructor
- ◆ Installation and Calibration Requirements
- ◆ An In-depth Understanding of 30 CFR Application
- ◆ Hands-on Session in the Mine Simulation Lab
- ◆ PowerPoint Presentation on the Aracoma Disaster and Changes Made in Fire Prevention Since 2006.

**Technical Coordinators:** **Cliff Adkins**  
**Randy Smith**

**Course Length:** **1 day**

**Tuition:** **\$84.00**

**Dates:** ***Scheduled upon request with  
a minimum of 10 attendees***

## **BLASTING (SURFACE) (COAL)**

[EX316C]

Scheduling  
at Worksite  
Available  
Upon Request

This course discusses the characteristics and use of explosives and blasting agents. It is designed to teach blasting standards in accordance with Institute Makers of Explosives (IME) guidelines and the Code of Federal Regulations (30 CFR). The course is structured for MSHA coal mine safety and health inspectors and industry personnel.

### **Contents:**

- ◆ Definitions
- ◆ Transportation and Storage of Explosives and Blasting Agents
- ◆ Detonation Units
- ◆ Misfires
- ◆ Electric and Nonelectric Blasting Operations
- ◆ Explosives Hazards and Accidents
- ◆ Safe Blasting Principles (Work Procedures and Blast Plans)
- ◆ Initiation Systems

**Technical Coordinator:** Roger Montali

**Course Length:** 3 days

**Tuition:** \$252.00

**Dates:** *Scheduled upon request with  
a minimum of 10 attendees*

## **ELECTRICAL SAFETY FOR COAL MINERS**

**[EL707C]**

Scheduling  
at Worksite  
Available  
Upon Request

This course is designed to provide practical methods and techniques to identify electrical hazards and the appropriate enforcement actions to be taken. This course is for MSHA coal inspection personnel with limited or no electrical expertise.

### **Contents:**

- ◆ Basic Electrical Theory
- ◆ Basic Circuitry
- ◆ Hazard Recognition
- ◆ Grounding
- ◆ Power Distribution Systems
- ◆ Regulations and Policies
- ◆ Personal Safety
- ◆ Citations and Orders
- ◆ Inspection of Electrical Equipment
- ◆ Permissibility

**NOTE: This course is not intended for Electrical Specialists.**

**Technical Coordinators:** Randy Smith  
Cliff Adkins

**Course Length:** 3 days

**Tuition:** \$252.00

**Dates:** *Scheduled upon request with  
a minimum of 10 attendees*

## FIRST AID/ CPR/ AED USAGE [SF700G]

Scheduling  
at Worksite  
Available  
Upon Request

Students who successfully complete this course will receive National Safety Council (NSC) Certification.

### Content will include but not limited to:

- ◆ Basic Life Support (Adult)
- ◆ CPR
- ◆ AED Usage
- ◆ Acting in an Emergency
- ◆ Heart Attack and Chest Pain
- ◆ Bleeding
- ◆ Sudden Illness

Technical Coordinator:	Bret Park
Course Length:	1 day
Tuition:	\$84.00
Dates:	<i>Scheduled upon request with a minimum of 10 attendees</i>



# FIRST RESPONDER SAFETY / MINE SITE EMERGENCIES WORKSHOP

[GS600G]

Scheduling  
at Worksite  
Available  
Upon Request

This is a one-day workshop designed to provide MSHA personnel, the mining industry, miners' representatives, firefighters, law enforcement personnel and emergency medical personnel with information and precautions that should be taken before or while responding to an emergency at surface mines, surface areas of underground mines, and surface mining facilities.

## Contents:

- ◆ Emergency Response Planning
- ◆ Large Haul Truck and Equipment Fires
- ◆ Structures In and Around Surface Facilities
- ◆ Use of Mine Equipment for Rescue & Fire Fighting
- ◆ Traffic Control on Surface Mine Roadways
- ◆ First Responder Vehicle Maintenance (Brakes & Steering)
- ◆ National Incident Management System (NIMS) Overview

## Surface Mine Hazards Addressed:

- ◆ Explosives Storage
- ◆ Surge Pile Safety
- ◆ Draw-off Tunnels
- ◆ Fuel Storage (stationary and mobile)
- ◆ Belt Conveyor and Travelway Safety
- ◆ Electricity
- ◆ Preparation Plants and Mills
- ◆ Off Road Haul Trucks and End Loaders
- ◆ Highwall Safety and Highwall Mining Machines
- ◆ Chemicals and Gases Common to Mines and Facilities
- ◆ Surface Areas of Underground Mines

**Technical Coordinator:** Johnnie Tyler

**Course Length:** 1 day

**Tuition:** None

**Dates:** *Scheduled upon request with  
a minimum of 10 attendees*

## HAULAGE (SURFACE) (COAL) [HL301C]

Scheduling  
at Worksite  
Available  
Upon Request

Haulage accidents have been one of the highest categories of fatal accidents for several years at our Nation's surface mines. This course teaches the recognition of hazards that may exist in surface haulage.

### Contents:

- ◆ Compliance Determination of 30 CFR Parts 77.400 and 77.1600
- ◆ Inspection Procedures for Surface Mining Equipment
- ◆ Use of Signs and Traffic Control on Mine Property
- ◆ Haul Road Design
- ◆ Brake Systems
- ◆ New Technology (Video Cameras)
- ◆ Rollover Protective Structures (ROPS)
- ◆ Falling Object Protective Structures (FOPS)
- ◆ Tire and Rim Safety
- ◆ Overview of Fatal Accidents

**Technical Coordinators:** Johnnie Tyler  
Roger Montali

**Course Length:** 3 days

**Tuition:** \$252.00

**Dates:** *Scheduled upon request with  
a minimum of 10 attendees*

## INDUSTRIAL HYGIENE

### [IH315C]

Scheduling  
at Worksite  
Available  
Upon Request

This course will enable mine safety and health inspectors to recognize and effectively assess health hazards, other than dust and noise, in coal mines and related areas. Laboratory exercises will include sampling procedures and techniques for more common health hazards that may be encountered during inspections. Other health hazard sampling procedures and techniques as well as health effects – respiratory, dermatological, carcinogenic – will be discussed.

### Contents:

- ◆ Industrial Hygiene Terminology
- ◆ Toxicology
- ◆ Solvents
- ◆ Asbestos
- ◆ Radiation (Gamma, Ultraviolet)
- ◆ Sampling Methods
- ◆ Methods of Control
- ◆ Contaminants Detected at Mine Sites

**Technical Coordinators:** Chip Booth  
Marcus Ramirez

**Course Length:** 3 days

**Tuition:** \$252.00

**Dates:** *Scheduled upon request with  
a minimum of 10 attendees*

## **INSPECTOR'S PORTABLE APPLICATIONS FOR LAPTOPS (IPAL) REVIEW – COAL [CT307C]**

Scheduling  
at Worksite  
Available  
Upon Request

### ***MSHA PERSONNEL ONLY***

The IPAL review course is designed for MSHA coal mine safety and health inspectors. The course reviews the latest version of the IPAL Program. The course also covers the fundamentals of the computer operating system, troubleshooting, and how to use the computer to reference resource material stored in the computer.

#### **Contents:**

- ◆ IPAL (Inspector's Portable Applications for Laptops)
- ◆ Reference Material (30 CFR, Mine Act, PPM, Policy Information Letters, and Program Information Bulletins)
- ◆ Basic Troubleshooting and Maintenance of the Laptop Computer and the IPAL Program
- ◆ Using Citrix Metaframe

**Technical Coordinators: Teresa Reynolds  
Vince Nicolau**

**Course Length: 2 days**

**Tuition: None**

**Dates: *Scheduled upon request***

# LONGWALL MINING AND INSPECTION PROCEDURES

[MS302C]

Scheduling  
at Worksite  
Available  
Upon Request

This course will introduce the student to longwall mining. It will also make the experienced coal mine inspectors more familiar with the trends and new technology in longwall mining. It will cover all aspects of longwall mining, including approved MSHA plans.

The first part of the course will cover all aspects of mining, including a review of all basic components of longwall mining systems and their functions. It will also cover longwall moves, degasification, and ground control for longwall faces.

The second part of the course will stress inspection procedures. It will cover all areas – from outby to the longwall face. This section has accompanying text and relates inspection procedures to the applicable standards in 30 CFR Parts 75 and 18.

## Contents:

- ◆ History and Trends
- ◆ Parts of a Longwall (shearer, plow, panline, stage loader, drives, etc.)
- ◆ Shields (parts and controls)
- ◆ Strata Control (above the longwall)
- ◆ Hydraulics
- ◆ Longwall Moves
- ◆ Special Roof Control Products for Longwalls
- ◆ Basic Longwall Electrical Systems
- ◆ Degasification
- ◆ Respirable Dust Control
- ◆ Inspection Procedures (Special Emphasis)
- ◆ Regulations

**Technical Coordinators:** Jon Braenovich  
Matilda Collins

**Course Length:** 1 day

**Tuition:** \$84.00

**Dates:** *Scheduled upon request with  
a minimum of 10 attendees*

## **MARSHALL UNIVERSITY MASTERS OF SAFETY DEGREE (EMPHASIS IN MINE SAFETY)**

[NEMU003]

Courses will be offered pursuant to the Masters of Safety Degree (Mining Emphasis) program offered by the Academy through Marshall University. Courses will be offered in a blended learning environment using distance learning technology. Online courses are also planned to be offered in the Spring, Summer, and Fall 2017 semesters. Marshall University offers courses online through Blackboard. This is available to any person enrolled as a Marshall University graduate student. It is extremely important that you be accepted into the program by Marshall University so that any computer issues that may arise can be resolved prior to beginning the course.

Students must be admitted into the program **prior** to course enrollment. Application for Graduate Admission forms may be obtained by calling Cheryl Stevens at (304) 256-3236 or by going online to [www.marshall.edu](http://www.marshall.edu). College Chemistry 203, Math 130 (college algebra), and Physics 101 or the equivalent are prerequisites for admission to this program, as is a minimum undergraduate GPA of 2.5 or being registered as a professional engineer, or scoring at the mean or above on one area of the General GRE.

Enrollment for these online classes will be limited to 25 students and is on a first come first serve basis. First priority will be given to students who have taken courses previously in pursuit of this degree; those persons successfully admitted into the program through Marshall University will be given next preference.

Tuition and other related fees will be determined and posted at a later date. For more information, contact Kevin Malay by email at [malay.kevin@dol.gov](mailto:malay.kevin@dol.gov) or at (304) 256-3539.

<b>Technical Coordinator:</b>	<b>Kevin Malay</b>
<b>Dates:</b>	<b>Fall 2016</b>
	<b>Spring 2017</b>
	<b>Summer 2017</b>
	<b>Fall 2017</b>

## MINE ACCIDENT INVESTIGATION AND REPORT WRITING

[IV301G] *MSHA PERSONNEL ONLY*

This course is for coal, metal/nonmetal, technical support, EPD, and other MSHA individuals involved in accident investigation. The course reviews basic guidelines, procedures, and techniques used to investigate and report on accidents and other incidents involving health and safety in the mining industry.

Classroom activities and discussions cover reasons for accident investigations, the investigative process, data collection, accident reconstruction, proper analysis for corrective actions, and completion of investigative reports following relevant MSHA guidelines and policies. At the conclusion of the class, in a practical exercise, students will conduct a simulated accident investigation and prepare a report. **Students should bring their laptop computers.**

**\*Due to cumulative nature of course material, if a student misses any portion of the class, he/she may be required to return to a subsequent class. Enforcement students must have completed entry-level inspector training at least one year prior to the class date.**

### Contents:

- ◆ Overview of Accident Investigation
- ◆ Pre-Investigation Activities
- ◆ Dealing with Family Members
- ◆ Accident Reconstruction
- ◆ Photography/Sketching
- ◆ Interviewing Techniques
- ◆ Data Collection and Evaluation
- ◆ Developing Conclusions and Corrective Actions
- ◆ Report Writing
- ◆ Determining Root Causes

**Technical Coordinator: David Elkins**

**Course Length: 8 days**

**Dates: Mar 14 - 23, 2017, May 9 - 18, 2017**

**July 11 - 20, 2017, Dec 5 - 14, 2017**

## **MINE EXPLOSION PREVENTION**

[VN701G]

Scheduling  
at Worksite  
Available  
Upon Request

This course will review the causes and prevention of underground bituminous coal mine explosions. Students will learn to identify and address conditions which are known to cause or propagate explosions. Applicable Federal mining laws will be discussed and explained.

### **Content will include but not limited to:**

- ◆ Sources and Control of Coal Dust
- ◆ Accumulation of Combustible Material
- ◆ Rock Dust Application and Sampling

<b>Technical Coordinator:</b>	<b>Jonah Pritt</b>
<b>Course Length:</b>	<b>1 day</b>
<b>Tuition:</b>	<b>\$84.00</b>
<b>Dates:</b>	<b><i>Scheduled upon request with a minimum of 10 attendees</i></b>



# MINE HOIST AND ELEVATOR INSPECTION PROGRAM TRAINING

[HS606G]

Scheduling  
at Worksite  
Available  
Upon Request

This training module covers the inspection of mine hoist and elevators and the impact of the mine environment on critical hoist and elevator components. An emphasis will be made also on Mechanical Escape Facilities. It will enable the student to perform basic mine hoist and elevator inspections, focusing on critical safety concerns, including those identified in recent mine accidents. The material will be correlated to the applicable sections of 30 CFR, the ASME A17 Elevator Code, and variety of information pertaining to wire ropes.

During the hands-on time, the student will be taught the proper way to measure a wire rope, when it is required, locations of measurements, and the “out of service” criteria for both wire ropes and their terminations. This course is for MSHA coal and metal/nonmetal mine safety and health inspectors and industry personnel.

## Contents:

- ◆ Wire Rope Technology
- ◆ Terminations and Attachments
- ◆ Removal Criteria According to 30 CFR
- ◆ A Review of the ASME A17 Elevator Code
- ◆ Hazard Recognition
- ◆ Inspection Procedure
- ◆ Citation and Order Writing

**Technical Coordinators:** Cliff Adkins  
Randy Smith

**Course Length:** 3 days

**Tuition:** \$252.00

**Dates:** At the Academy’s Discretion

***Scheduled upon request with a  
minimum of 10 attendees***

## MINE VENTILATION [VN700G]

Scheduling  
at Worksite  
Available  
Upon Request

This course will review the basic principles of underground coal mine ventilation along with applicable Federal mining laws.

### **Content will include but not limited to:**

- ◆ Mine Fans
- ◆ Mine Gases
- ◆ Air Readings
- ◆ Ventilation Plans
- ◆ Mine Maps
- ◆ Bleeders
- ◆ Seals
- ◆ Ventilation Control
- ◆ Face Ventilation
- ◆ Outby Ventilation

**Technical Coordinators:** Jonah Pritt  
Keith Stone

**Course Length:** 3 days

**Tuition:** \$252.00

**Dates:** *Scheduled upon request with  
a minimum of 10 attendees*

# NOISE HAZARDS, REGULATION, AND CONTROL

[IH321G]

Scheduling  
at Worksite  
Available  
Upon Request

This course provides the participant with information on the hazards associated with overexposure to noise. It thoroughly reviews 30 CFR Part 62 and appropriate monitoring and control methods. The course also discusses the elements of an effective hearing conservation program.

## Contents:

- ◆ Characteristics of Noise
- ◆ Impact of Noise on Health
- ◆ Noise Monitoring
  - > Sound Level Meters
  - > Dosimeters
  - > Octave Band Analysis
- ◆ Audiometric Examinations
- ◆ Noise Regulation - Compliance Discussion
  - > Exposure levels
  - > Monitoring
  - > Hearing Conservation Programs
  - > Training Requirements
- ◆ Control methods

**Technical Coordinators:** Donald Booth  
Marcus Ramirez

**Course Length:** 3 days

**Tuition:** \$252.00

**Dates:** *Scheduled upon request with  
a minimum of 10 attendees*

## **ROOF CONTROL SEMINAR**

**[RC501C]**

This seminar is designed for miners, company managers, engineers, trainers, roof bolter machine operators, and for any individual involved with coal mine roof safety. Federal and state enforcement personnel desiring to increase their knowledge in the latest developments in roof and rib control will also find this seminar very beneficial.

This seminar will update personnel on new products and methods related to roof stability. It will also include presentations by personnel from the Academy, Technical Support, MSHA headquarters, other government agencies, and industry. All subjects will incorporate safe mining practices which will help reduce roof fall injuries and fatalities. The seminar will discuss new roof control techniques, trends, and developments.

### **Contents:**

- ◆ New Roof Bolting Products
- ◆ Supplemental Supports
- ◆ Roof Control Fatality Trends and Prevention
- ◆ Roof Control Machinery Updates

**Technical Coordinator: Jon Braenovich**

**Course Length: 1 day**

**Tuition: None**

**Dates: May 31, 2017**

## **SLOPE AND SHAFT SINKING SAFETY**

[RC310G]

Scheduling  
at Worksite  
Available  
Upon Request

This course will include a description of the most common conventional slope and shaft construction process, the hazards associated with slope and shaft work, and inspection procedures. It will also discuss the hazards associated with hoisting and cover the inspection procedures for wire ropes.

### **Contents:**

- ◆ Slope and Shaft Construction Process
- ◆ Ventilation
- ◆ Ground Control
- ◆ Hoisting
- ◆ Electrical
- ◆ Health
- ◆ Slope and Shaft Sinking Plans
- ◆ Inspection Guidelines
- ◆ Hazard Identification

**Technical Coordinator:** Roger Montali

**Course Length:** 2 days

**Tuition:** \$168.00

**Dates:** *Scheduled upon request with  
a minimum of 10 attendees*

## **SURFACE FACILITIES AND COAL PREPARATION**

[PP601C]

Scheduling  
at Worksite  
Available  
Upon Request

This course is designed to familiarize the student with equipment and processes used in coal preparation plants; hazards that might exist around preparation plants; and inspection requirements for such plants. This course has been expanded to include structural safety in an effort to eliminate surface structural failures in the mining industry.

### **Contents:**

- ◆ Structural Safety
- ◆ Equipment Guarding
- ◆ Stockpile Safety
- ◆ Delivery Methods to the Plant
- ◆ Crushing, Sizing, and Washing Processes
- ◆ Dewatering and Drying
- ◆ Storage of Raw and Clean Coal
- ◆ Potential Hazards
- ◆ Preparation Plant Inspection

**Technical Coordinator:** Johnnie Tyler

**Course Length:** 3 days

**Tuition:** \$252.00

**Dates:** *Scheduled upon request with  
a minimum of 10 attendees*

## UNDERGROUND DIESEL EQUIPMENT/ VENTILATION [VN321G]

Scheduling  
at Worksite  
Available  
Upon Request

This course provides the participants with techniques to conduct an evaluation of existing underground diesel mining equipment. Basic air sampling principles will be presented. The impact of diesel equipment on the mine ventilation system and the mine ventilation plan will be discussed. The health hazards associated with diesel equipment and diesel fuel will be examined.

Primary emphasis will focus on the Code of Federal Regulations (30 CFR) related to underground mining operations. The class will integrate technology with case studies and basic laboratory work.

### Contents:

- ◆ Code of Federal Regulations Review
- ◆ Air Sampling Procedures
- ◆ Introduction to Basic Air Flow Measurement Techniques
- ◆ Equipment
- ◆ Health Hazards
- ◆ Proper Health Sampling Techniques
- ◆ Review of Diesel Technology

**Technical Coordinators:** Jonah Pritt  
Keith Stone

**Course Length:** 3 days

**Tuition:** \$252.00

**Dates:** *Scheduled upon request with  
a minimum of 10 attendees*

## UNDERGROUND ELECTRICAL CIRCUIT PROTECTION OVERVIEW [EL606C]

Scheduling  
at Worksite  
Available  
Upon Request

This course is designed to provide an overview of the requirements of the National Electrical Code as applied to underground electrical circuit protection and provides compliance information for the mining community. This course is for coal industry electrical instructors and maintenance personnel.

### Contents:

- ◆ Trailing Cables and Power Cables
- ◆ Application of 30 CFR and the NEC Underground
- ◆ General Rules for Circuit Protection
- ◆ Protection of Motor Circuits
- ◆ Protection of Non-motor Circuits
- ◆ Protection of Combination Circuits

**Technical Coordinator:** Randy Smith  
**Course Length:** 1 day  
**Tuition:** \$84.00  
**Dates:** *Scheduled upon request with  
a minimum of 10 attendees*



## **UNDERGROUND HAULAGE, TRANSPORTATION, AND MACHINERY (COAL)**

[HL321C]

Haulage or machinery-related accidents continue to be one of the leading causes of fatalities in underground mining. These two categories are also the leading causes of nonfatal accidents in underground mining which result in lost work days.

This course for MSHA Coal Journeyman inspectors teaches recognition of some of the hazards associated with haulage equipment and other machinery found in underground coal mines and methods to eliminate them. The inspector will recognize haulage hazards and the appropriate enforcement action to take.

### **Contents:**

- ◆ Recent Statistical Data
- ◆ Investigative Findings of Some Recent Accidents
- ◆ Difference Between Accidents Classified as Haulage and Those Classified as Machinery
- ◆ Regulations and Policy
- ◆ Safeguards
- ◆ Enforcement Action: Citations and Orders

**Technical Coordinators:** Brandon Ellison

Cliff Adkins

**Course Length:** 2 days

**Tuition:** \$168.00

**Dates:** *Scheduled upon request with  
a minimum of 10 attendees*

## WORKPLACE EXAMINATIONS [VN702G]

Scheduling  
at Worksite  
Available  
Upon Request

This course is designed for mine examiners. Discussion will focus on what the examiner should be looking for during a workplace examination. Applicable Federal mining laws will be discussed and explained.

### Content will include but not limited to:

- ◆ Pre-shift Examinations
- ◆ Supplemental Examinations
- ◆ On-Shift Examinations
- ◆ Weekly Examinations
- ◆ Hazard Identifications

**Technical Coordinators:** Jonah Pritt  
Keith Stone

**Course Length:** 1 day

**Tuition:** \$84.00

**Dates:** *Scheduled upon request with  
a minimum of 10 attendees*

## **Coal Mine Safety and Health Inspectors Retraining**

**[LP311C] *MSHA PERSONNEL ONLY***

MSHA underground and surface coal mine safety and health inspectors are required to receive a minimum of 48 hours of training every two years. This is the first year of the current two-year training cycle for journeyman coal mine safety and health inspectors. Listed below are the dates of the training sessions scheduled at the Academy.

### **Underground Coal Mine Safety and Health Inspectors (LP311C)**

#### **Brandon Ellison, Coordinator Schedule**

February 14 - 16, 2017

May 16 - 18, 2017

July 11 - 13, 2017

August 15 - 17, 2017

#### **VTC Training Districts 2 & 3**

TBD

#### **Districts 5 & 8**

TBD

### **Subjects for Coal Mine Safety and Health Inspectors Retraining:**

Computer Data Retrieval Issues  
Seals and Bleeders

CO/AMS Systems  
Electrical Enforcement Consistency  
Law, Regulation and Policy  
Fire Protection on Conveyor Belt Lines  
Part 48  
Diesel  
Accountability Issues

**Surface Coal Mine  
Safety and Health Inspectors  
(LP312C)**

**Johnnie Tyler, Coordinator**

**Schedule**

TBD

**Subjects**

Surface Coal Overview  
SLAM Risks & Root Cause Process for Accident,  
Incident & Violation Analysis  
Maintenance, Construction & Repairs Accident  
Reduction Program  
Thin Seam Highwall Miners  
Health Procedures  
Surface Haulage Issues  
PowerPoint and Inspection Closeout  
Electrical  
Law, Regulation and Policy  
Surface Blasting Technology  
Basic Rigging  
Advanced Citation & Order Writing  
Interviewing and Notetaking  
Provisions for Clear Cutting on Surface Mines

Three days of training will be combined with the Mine Construction, Maintenance, and Repairs Safety Workshop and the Surface Haulage Workshop.

## **Coal Entry Level Mine Safety and Health Inspectors Training**

The courses listed in this section are designed for entry level coal mine safety and health inspectors. However, they may be attended by other Federal, state, mining industry, and labor organization personnel.

Training dates are given with each module.

Cheryl Stevens  
Department of Instructional Services  
National Mine Health and Safety Academy  
1301 Airport Road  
Beaver, West Virginia 25813-9426

TELEPHONE: (304) 256-3236  
FAX: (304) 256-3247  
E-MAIL: [stevens.cheryl@dol.gov](mailto:stevens.cheryl@dol.gov)

### **COAL CURRICULUM (MODULES I-VI)**

The following chart shows the required core courses for entry level mine safety and health inspectors.

Wellness training is scheduled for each module.  
Laptop computer and printer required for all modules.

### **MODULE I (4 weeks)**

Orientation	Law, Regulation & Policy	Citations/Order Writing
Introduction to MSHA/ DOL	Introduction to Laptops	and Notetaking: Inspector's
Inspection Procedures	Effective Citation Writing	Portable Applications for Laptops (IPAL)

### **MODULE II (4 weeks)**

Mine Act - S&S & 104(d), Part 45 Contractors	Workplace Examination	Professionalism
IPAL C/O Review A	Combustible Materials and Rockdusting	Part 48 Training Requirements
Part 50 Reporting Requirements & Auditing	Conference Presentation Preparation	Conference Presentation Communications
Introduction to Special Investigations/Mine Act - 105(c), 110(c)	Noise/Respirable Dust	

### **MODULE III (4 weeks)**

Jurisdiction Issues	Accountability	Mine Act 107(a), 103(g)
Mine Electricity	Ventilation I/ Mine Maps/ Longwall	Ground Control
Simulated Inspection	Roof Control	
Hoisting		

### **MODULE IV (3 weeks)**

Electrical Permissibility	Diesel Permissibility	IPAL Review B
Accident Investigation	Underground Haulage	Ventilation II

### **MODULE V (3 weeks)**

Interviewing Techniques	Courtroom Procedures	Slope & Shaft Sinking
Surface Haulage	Drilling & Blasting	

### **MODULE VI (3 weeks)**

Electrical Review	Permissibility	Impoundments
Fire Protection	Fire Detection & Monitoring	Mine Act 103(f), 103(k)
Surface Structure	Mine Rescue/Part 49	General Review
Articulating Trucks		

## **Coal Entry Level Required Online Training**

### **Prior to Module I:**

- ◆ Orientation to the National Mine Health and Safety Academy
- ◆ Employee Health and Safety
- ◆ Standards of Conduct
- ◆ Employee Accident Reporting
- ◆ OJT Application for Entry Level Inspectors
- ◆ Rules to Live By I
- ◆ Rules to Live By II
- ◆ Rules to Live By III
- ◆ Wellness Part I

### **Prior to Module II:**

- ◆ Part 45 Contractors
- ◆ Safety Talks
- ◆ Part 50
- ◆ Workplace Exams
- ◆ Miscellaneous Health Standards
- ◆ Hazard Communications
- ◆ Noise
- ◆ Respirable Dust
- ◆ Professionalism
- ◆ Part 48
- ◆ Communications

### **Prior to Module III:**

- ◆ Mine Electricity
- ◆ Hoisting
- ◆ Ventilation I

Prior to Module IV:

- ◆ Electrical Permissibility
- ◆ Diesel Permissibility
- ◆ Underground Haulage
- ◆ Accident Investigation
- ◆ Root Cause Analysis
- ◆ Behavioral Based Safety

Prior to Module V:

- ◆ Interviewing Techniques
- ◆ Courtroom Procedures
- ◆ Surface Haulage
- ◆ Drilling and Blasting
- ◆ Slope and Shaft Sinking

Prior to Module VI:

- ◆ Impoundments
- ◆ Fire Protection
- ◆ Structural Safety
- ◆ Tree Cutting
- ◆ Fire Detection and Monitoring
- ◆ Mine Rescue/Part 49
- ◆ Miscellaneous Safety Standards
- ◆ Wellness Part II
- ◆ Technical Support Overview
- ◆ Mine Gases



# Coal Entry Level Mine Safety and Health Inspectors Training

*(Dates include travel days)*

## Group 105

Module VI	September 12, 2016 – September 30, 2016
Graduation	September 29, 2016

## Group 106

Module V	September 12, 2016 – October 7, 2016
Module VI	November 27, 2016 – December 16, 2016
Graduation	December 15, 2016

## Group 107

Module V	September 12, 2016 – September 30, 2016
Module VI	January 22, 2017 – February 10, 2017
Graduation	February 9, 2017

## Group 108

Module II	September 12, 2016 – October 8, 2016
Module III	November 28, 2016 – December 16, 2016
Module IV	January 23, 2017 – February 17, 2017
Module V	March 27, 2017 – April 14, 2017
Module VI	June 11, 2017 – June 30, 2017
Graduation	June 29, 2017



## Computer Training Schedule

Contents of each computer class are listed followed by a schedule by course dates. All persons attending, except employees of Federal, state, or local governments, will be charged a tuition fee of \$252.00 for a three-day class; \$168.00 for a two-day class; and \$84.00 for a one-day class.

## NEED MORE INFO? CONTACT:

Additional information may be obtained by contacting the  
Course Coordinators:

Vince Nicolau (304) 256-3323 or Teresa Reynolds (304) 256-3209

National Mine Health and Safety Academy  
Student Services Branch  
1301 Airport Road  
Beaver, West Virginia 25813-9426

TELEPHONE: (304) 256-3252  
FAX: (304) 256-3251

## **MICROSOFT® EXCEL 2010 – BASIC**

[CT721G]

Excel 2010 is a spreadsheet program that can be used to organize, analyze and attractively present data, such as a budget or sales report. This course requires a prior knowledge of computers. Classroom activities include hands-on work in the Computer Laboratory.

### **Contents:**

- ◆ Excel Basics
- ◆ Entering and Editing Data
- ◆ Modifying a Worksheet
- ◆ Using Functions
- ◆ Formatting Worksheets
- ◆ Printing
- ◆ Creating Charts
- ◆ Using the Help Feature

**Technical Coordinators: Vince Nicolau  
Teresa Reynolds**

**Course Length: 2 days**

**Tuition: \$168.00**

**Dates: February 7 - 8, 2017**

## **MICROSOFT® EXCEL 2010 – INTERMEDIATE**

**[CT722G]**

Excel 2010 is a spreadsheet program that can be used to organize, analyze and attractively present data, such as a budget or sales report. This course requires a prior knowledge of computers and the Basic Excel course. Activities include hands-on work in the Computer Laboratory.

### **Contents:**

- ◆ Working With Large Worksheets
- ◆ Working With Multiple Worksheets and Workbooks
- ◆ Advanced Charting
- ◆ Advanced Formatting
- ◆ Using Templates
- ◆ Additional Functions
- ◆ Protecting Parts of a Worksheet

**Technical Coordinators:**    **Teresa Reynolds**  
   **Vince Nicolau**

**Course Length:**    **2 days**

**Tuition:**    **\$168.00**

**Dates:**    **April 11 - 12, 2017**

## **MICROSOFT® EXCEL 2010 – ADVANCED**

**[CT702G]**

Requires prior knowledge of at least the Basic Excel course and includes hands-on work in the Computer Laboratory.

### **Covers the following more advanced Excel topics:**

- ◆ Logical and Statistical Functions
- ◆ Financial and Date Functions
- ◆ Lookups and Date Functions
- ◆ Advanced Data Management
- ◆ Exporting and Importing Data
- ◆ Analytical Tools
- ◆ Macros and Custom Functions

**Technical Coordinators:** Teresa Reynolds  
Vince Nicolau

**Course Length:** 2 days

**Tuition:** \$168.00

**Dates:** June 6 - 7, 2017

## **MICROSOFT® POWERPOINT 2010**

**[CT711G]**

Microsoft® PowerPoint 2010 is a presentation program that allows users to create overhead slides, speaker notes, audience handouts and outlines – all in a single presentation file. PowerPoint offers powerful tools to help create and organize a presentation step by step. This class includes hands-on work in the Computer Laboratory, and development of a sample presentation.

### **Contents:**

- ◆ Choose the Best Method to Start a Presentation
- ◆ Create a Presentation Using Suggested Content and a Design Template
- ◆ Browse Through a Presentation
- ◆ Enter and Edit Text in a Presentation
- ◆ View a Presentation
- ◆ Insert Slides from Other Presentations
- ◆ Rearrange Slides in a Presentation
- ◆ Create a Folder to Store a Presentation
- ◆ Change Text Alignment and Spacing
- ◆ Find and Replace Text and Fonts
- ◆ Correct Text While Typing
- ◆ Check Spelling and Presentation Styles
- ◆ Add a Header and Footer
- ◆ Choose the Right Print Settings
- ◆ Preview and Print a Presentation
- ◆ Enter and Print Speaker Notes

**Technical Coordinators: Vince Nicolau  
Teresa Reynolds**

**Course Length: 2 days**

**Tuition: \$168.00**

**Dates: June 13 - 14, 2017**

## **MICROSOFT® WORD 2010**

[CT707G]

Microsoft® Word 2010 is a word-processing program that is used to compose and update a wide range of business documents. It offers many desktop-publishing features that let you enhance the appearance of documents. Word also has the power and flexibility to produce professional documents quickly and easily.

### **Contents:**

- ◆ Create a Document
- ◆ Edit and Format
- ◆ Present Information in Tables and Columns
- ◆ Work With Graphics/Charts
- ◆ Customize Word for the Way You Work
- ◆ Create Form Letters and Labels
- ◆ Create Forms
- ◆ Work With Footnotes and Bookmarks
- ◆ Work With Tables of Contents and Indexes

<b>Technical Coordinators:</b>	<b>Vince Nicolau Teresa Reynolds</b>
<b>Course Length:</b>	<b>2 days</b>
<b>Tuition:</b>	<b>\$168.00</b>
<b>Dates:</b>	<b>September 6 - 7, 2017</b>



## Certification and Qualification Courses

The courses in this section are available to MSHA and industry personnel. Upon successful completion of any of these courses, participants will receive the required MSHA certification for the particular area covered.

Scheduling  
at Worksite  
Available  
Upon Request

Courses marked by this icon may be held at your worksite. The course will be offered upon request with a minimum of 10 attendees. If your company or organization would like any of these courses presented onsite, contact Cheryl Stevens at (304) 256-3236. The course will then be scheduled.

Any company or organization requesting a course to be presented at their worksite will be required to pay the tuition fee of \$84.00 per day for each person and travel expenses for the MSHA instructor.

If you need more information about contents of a course, contact the technical coordinator for that course at (304) 256-3100 or Cheryl Stevens at (304) 256-3236.

## TO ENROLL CONTACT:

National Mine Health and Safety Academy  
Student Services Branch  
1301 Airport Road  
Beaver, West Virginia 25813-9426  
TELEPHONE: (304) 256-3252  
FAX: (304) 256-3251

## **ANNUAL RETRAINING FOR IMPOUNDMENT QUALIFICATION**

[IM602C]

Scheduling  
at Worksite  
Available  
Upon Request

This course provides the annual retraining requirements for qualified impoundment mine safety and health inspectors. Impoundment mine safety and health inspectors are required to receive annual retraining in accordance with the requirements specified in the Code of Federal Regulations [30 CFR 77.107-1(b)].

**Please Note: MSHA Qualification and Certification no longer accepts Social Security Numbers on the application form that you must fill out in order to receive your qualification for impoundment inspection card after successful completion of the course. You will need an MSHA Individual Identification Number, available by applying online at:**

**<http://www.msha.gov/forms/elawsforms/5000-46.htm>**

### **Contents:**

- ◆ Reviews of Proper Inspection Procedures
- ◆ Signs of Impoundment Stress
- ◆ Instrumentation Monitoring
- ◆ Construction Monitoring
- ◆ Emergency Action Planning
- ◆ Foundation Analysis
- ◆ Geotechnical Investigations
- ◆ Breakthrough Potential Analysis

**Technical Coordinator: Jared Adkins**

**Course Length: 4 hours**

**Tuition: \$48.00**

**Dates: November 17, 2016  
May 11, 2017  
August 17, 2017**

***Scheduled upon request with a minimum of 10 attendees***

# **CONTINUOUS PERSONAL DUST MONITOR (CPDM) MAINTENANCE AND CALIBRATION CERTIFICATION**

[IH404G]

Scheduling  
at Worksite  
Available  
Upon Request

This course provides the initial training for personnel who are required to calibrate and maintain a CPDM used to collect coal mine dust samples.

Successful completion of this course certifies the participant to calibrate and maintain the CPDM under the Code of Federal Regulations (30 CFR Parts 70/71/90).

## **Contents:**

Instruction in the Regulations Governing the Coal Mine Operator's Respirable Dust Sampling Program using a CPDM including:

- ◆ Responsibilities of the Certified Person for Maintenance and Calibration
- ◆ Properties of the Approved Sampling Unit

## **Hands-on Instructions:**

- ◆ Pump Calibration Procedures
- ◆ Maintenance Requirements
- ◆ Sampling Unit Inspection
- ◆ Pre-Shift Checks of Approved Sampling Unit

**Technical Coordinator: Donald Booth**

**Course Length: 8 hours**

**Tuition: \$84.00**

**Dates: Oct 13, 2016, Nov 9, 2016, Dec 14, 2016,  
Jan 12, 2017, Mar 23, 2017, Apr 20, 2017,  
Aug 23, 2017, Sept 14, 2017, Dec 13, 2017**

***Scheduled upon request with a minimum of 10 attendees,  
maximum of 18***

# CONTINUOUS PERSONAL DUST MONITOR (CPDM) SAMPLING CERTIFICATION

[IH403G]

Scheduling  
at Worksite  
Available  
Upon Request

This course provides the initial training for personnel who are required to sample with a CPDM to collect coal mine dust samples.

Successful completion of this course certifies the participant to calibrate and maintain the CPDM under the Code of Federal Regulations (30 CFR Parts 70/71/90).

## Contents:

Instruction in the Regulations Governing the Coal Mine Operator's Respirable Dust Sampling Program including:

- ◆ Responsibilities of the Certified Sampler
- ◆ Respirable Dust Sampling Procedures using a CPDM
- ◆ Approved Sampling Units

## Hands-on Instructions:

- ◆ Inspection
- ◆ Use

**Technical Coordinator: Donald Booth**

**Course Length: 8 hours**

**Tuition: \$84.00**

**Dates: Oct 12, 2016, Nov 8, 2016, Dec 13, 2016**

**Jan 11, 2017, Mar 22, 2017, Apr 19, 2017**

**Aug 22, 2017, Sept 13, 2017, Dec 12, 2017**

***Scheduled upon request with a minimum of 10 attendees,  
maximum of 18***

## FIRST AID/ CPR/ AED USAGE

[SF700G]

Scheduling  
at Worksite  
Available  
Upon Request

Students who successfully complete this course will receive National Safety Council (NSC) Certification.

### Content will include but not limited to:

- ◆ Basic Life Support (Adult)
- ◆ CPR
- ◆ AED Usage
- ◆ Acting in an Emergency
- ◆ Heart Attack and Chest Pain
- ◆ Bleeding
- ◆ Sudden Illness

Technical Coordinator:	Bret Park
Course Length:	1 day
Tuition:	\$84.00
Dates:	<i>Scheduled upon request with a minimum of 10 attendees</i>

## **QUALIFICATION FOR IMPOUNDMENT INSPECTION**

**[IM601C]**

**Scheduling  
at Worksite  
Available  
Upon Request**

This course provides the initial training for personnel who are required to inspect impoundments. Successful completion of this course qualifies the participant to inspect impoundments as required by the Code of Federal Regulations [30 CFR 77.216-3(g)].

**Please Note: MSHA Qualification and Certification no longer accepts Social Security Numbers on the application form that you must fill out in order to receive your qualification for impoundment inspection card after successful completion of the course. You will need an MSHA Individual Identification Number, available by applying online at:**

**<http://www.msha.gov/forms/elawsforms/5000-46.htm>**

### **Contents:**

Introductory training on:

- ◆ Recognizing Deficiencies and Signs of Distress
- ◆ Failure Modes
- ◆ Foundation Analysis
- ◆ Geotechnical Investigation
- ◆ Breakthrough Potential Analysis
- ◆ Common Instrumentation
- ◆ Facility Configurations
- ◆ Field Hazard Classifications
- ◆ Reporting Requirements
- ◆ Inspection Forms

**Technical Coordinator: Jared Adkins**

**Course Length: 8 hours**

**Tuition: \$84.00**

**Dates: November 15, 2016**

**May 9, 2017**

**August 15, 2017**

***Scheduled upon request with a minimum of 10 attendees***

# RESPIRABLE COAL MINE DUST SAMPLER CALIBRATION/MAINTENANCE CERTIFICATION

[IH602C]

Scheduling  
at Worksite  
Available  
Upon Request

This course provides the initial training for personnel who are required to calibrate and maintain coal mine dust sampling equipment.

Successful completion of this course certifies the participant to calibrate and maintain respirable coal mine dust sampler units under the current Code of Federal Regulations (30 CFR Parts 70/71/90).

## Contents:

- ◆ Properties of the Approved Sampling Unit
- ◆ Responsibilities of the Certified Person for Maintenance and Calibration

## Hands-on Instruction:

- ◆ Pump Calibration Procedures
- ◆ Maintenance Requirements
- ◆ Sampling Unit Inspection
- ◆ Pre-Shift Checks of Approved Sampling Unit

**Technical Coordinator:** Donald Booth

**Course Length:** 8 hours

**Tuition:** \$84.00

**Dates:** May 17, 2017

July 12, 2017

*Scheduled upon request with  
a minimum of 10 attendees*

# RESPIRABLE COAL MINE DUST SAMPLING CERTIFICATION

[IH601C]

Scheduling  
at Worksite  
Available  
Upon Request

This course provides the initial training for personnel who are required to collect coal mine dust samples.

Successful completion of this course certifies the participant to collect and submit respirable coal mine dust samples under the current Code of Federal Regulations (30 CFR Parts 70/71/90).

## Contents:

Instruction in the Regulations Governing the Coal Mine Operator's Respirable Dust Sampling Program including:

- ◆ Nature of Respirable Dust Hazards
- ◆ Responsibilities of the Certified Sampler
- ◆ Respirable Dust Sampling Procedures
- ◆ Approved Sampler Units
- ◆ On-Shift Parameter Checks

## Hands-on Instructions for Sampling Unit:

- ◆ Assembly
- ◆ Inspection
- ◆ Use

**Technical Coordinator:** Donald Booth

**Course Length:** 8 hours

**Tuition:** \$84.00

**Dates:** May 16, 2017

July 11, 2017

*Scheduled upon request with  
a minimum of 10 attendees*



## General Courses for MSHA and the Mining Industry

The Academy courses described in this section are available to MSHA and industry personnel.

Scheduling  
at Worksite  
Available  
Upon Request

Courses marked by this icon may be held at your worksite. The course will be offered upon request with a minimum of 10 attendees. If your company or organization would like any of these courses presented onsite, contact Cheryl Stevens at (304) 256-3236. The course will then be scheduled.

Any company or organization requesting a course to be presented at their worksite will be required to pay the tuition fee of \$84.00 per day for each person and travel expenses for the MSHA instructor.



If you need more information about contents of a course, contact the technical coordinator for that course at (304) 256-3100 or Cheryl Stevens at (304) 256-3236.

## TO ENROLL CONTACT:

National Mine Health and Safety Academy  
Student Services Branch  
1301 Airport Road  
Beaver, West Virginia 25813-9426  
TELEPHONE: (304) 256-3252  
FAX: (304) 256-3251

## ACCIDENT PREVENTION TECHNIQUES

[SF601G]

Scheduling  
at Worksite  
Available  
Upon Request

This course is designed for safety managers/directors, mine managers, or anyone in the mining industry involved in safety management. Several proven accident reduction techniques are covered during the three-day class.

The course begins with a discussion on the principle of multiple causation and the importance of identifying the significant contributing factors in most mining accidents. Accidents/ incidents are divided into the three levels of causation with examples of each level discussed. Discussions focus on the indirect level of causation through a technique of identifying performance problems as either skill or motivational. Unsafe conditions and unsafe work practices are addressed through job safety analysis and job observation. Stress, safety communications, and effective safety talks will be covered.

The class concludes with a health and safety survey which can identify the strengths and weaknesses of a company's health and safety program.

### Contents:

- ◆ Accident/Incident Analysis
- ◆ Analyzing Performance Problems
- ◆ Safety Communications/Promotion
- ◆ Developing Effective Safety Talks
- ◆ Managing Stress
- ◆ Job Safety Analysis
- ◆ Job Observation
- ◆ Accident Investigation
- ◆ Mine Safety Program Rating Procedures

**Technical Coordinator: Joe Mackowiak**

**Course Length: 3 days**

**Tuition: \$252.00**

**Dates: *Scheduled upon request with a minimum of 10 attendees, maximum of 16***

## **ELECTRICAL SAFETY FOR COAL MINERS**

**[EL601C]**

Scheduling  
at Worksite  
Available  
Upon Request

This course is designed to provide practical methods and techniques to identify electrical hazards and the appropriate actions to take to correct them. This course is for coal industry personnel with limited or no electrical expertise.

### **Contents:**

- ◆ Basic Electrical Theory
- ◆ Basic Circuitry
- ◆ Hazard Recognition
- ◆ Grounding
- ◆ Power Distribution Systems
- ◆ Regulations and Policies
- ◆ Personal Safety
- ◆ Inspection of Electrical Equipment
- ◆ Permissibility

***NOTE: This course is not intended for Electrical Specialists.***

**Technical Coordinators: Randy Smith  
Cliff Adkins**

**Course Length: 3 days**

**Tuition: \$252.00**

**Dates: *Scheduled upon request with  
a minimum of 10 attendees***

## **ELECTRICAL SAFETY FOR METAL/NONMETAL MINERS**

**[EL601M]**

Scheduling  
at Worksite  
Available  
Upon Request

This course is designed to provide practical methods and techniques to identify electrical hazards and the appropriate enforcement actions to take to correct them. This course is for metal/nonmetal industry personnel with limited or no electrical expertise.

### **Contents:**

- ◆ Grounding
- ◆ Power Distribution Systems
- ◆ Inspection of Electrical Equipment
- ◆ Regulations and Policies
- ◆ Hazard Recognition
- ◆ Personal Safety

***NOTE: This course is not intended for Electrical Specialists.***

**Technical Coordinators:** Randy Smith  
Cliff Adkins

**Course Length:** 2 days

**Tuition:** \$168.00

**Dates:** ***Scheduled upon request with  
a minimum of 10 attendees***

## FIRST AID/ CPR/ AED USAGE

[SF700G]

Scheduling  
at Worksite  
Available  
Upon Request

Students who successfully complete this course will receive National Safety Council (NSC) Certification.

### Content will include but not limited to:

- ◆ Basic Life Support (Adult)
- ◆ CPR
- ◆ AED Usage
- ◆ Acting in an Emergency
- ◆ Heart Attack and Chest Pain
- ◆ Bleeding
- ◆ Sudden Illness

<b>Technical Coordinator:</b>	<b>Bret Park</b>
<b>Course Length:</b>	<b>1 day</b>
<b>Tuition:</b>	<b>\$84.00</b>
<b>Dates:</b>	<b><i>Scheduled upon request with a minimum of 10 attendees</i></b>

## HAZARD COMMUNICATION (HAZCOM)

[IH616G]

Scheduling  
at Worksite  
Available  
Upon Request

This course is designed to provide operators with information necessary to develop an effective HazCom program. It will review the requirements of 30 CFR Part 47, including identification of chemicals at the mine site, determining which chemicals are hazardous, establishing a HazCom Program, and informing miners about chemical hazards and appropriate protection measures.

### Contents:

- ◆ Purpose and Scope of the HazCom Standard
- ◆ Operators and Chemicals Covered
- ◆ Identification of Hazardous Chemicals
- ◆ Requirements for a HazCom Program
- ◆ Container Labels and Other Forms of Warning
- ◆ Material Safety Data Sheet (MSDS) Requirements
- ◆ HazCom Training Requirements
- ◆ Availability of HazCom Information
- ◆ Trade Secret Provisions
- ◆ Exemptions

**Technical Coordinator:** Johnnie Tyler

**Course Length:** 1 day

**Tuition:** \$84.00

**Dates:** *Scheduled upon request with  
a minimum of 10 attendees*

## INDUSTRIAL HYGIENE: SAMPLING FOR RESPIRABLE SILICA DUST AND NOISE

[IH621M]

*(offered on site only)*

This class, developed in cooperation with the National Stone, Sand and Gravel Association, **is to be scheduled at your worksite**. It involves two days of classroom work and a full day of on-site sampling for silica and noise. It prepares miners and mine operators to conduct ongoing sampling. Results of noise sampling are available immediately; dust samples require analysis in the laboratory, and the cost of analysis is picked up by the mine operator.

A minimum of 10 students is required; the maximum class size is 15 students.

### Contents:

- ◆ Hazards of Silica and Noise
- ◆ Introduction to Industrial Hygiene
- ◆ Sampling Equipment and Techniques Laboratory
- ◆ Record Keeping
- ◆ Calculations
- ◆ Controls

**Technical Coordinators: Donald Booth**

**Marcus Ramirez**

**Course Length: 3 days**

**Tuition: \$252.00**

**Dates: *Limited availability; to be arranged with individual operators***

***Scheduled upon request with a minimum of 10 attendees, maximum of 15***

## **INSTRUCTOR TRAINING WORKSHOP (PART 48) [GS643G]**

**Scheduling  
at Worksite  
Available  
Upon Request**

This course is intended to improve the instructional skills, abilities, and knowledge of mine trainers. Participants will be required to select, develop, and present a 15-minute training segment on a health or safety topic in 30 CFR Part 48. The presentation will be videotaped for playback and individual review.

Approval as a Part 48 instructor is a two-part process. (1) You must demonstrate that you have knowledge of the subjects that you will be teaching. This is generally accomplished by submitting an application to your local MSHA District Manager showing your mining experience and education. (2) You must demonstrate that you have the ability to teach. Successful completion of this course will assist you in meeting this requirement. There are no prerequisites for this course. Mining experience is helpful.

### **Contents:**

- ◆ Principles of Adult Instruction
- ◆ Developing Objectives and Developing Criterion Test Items
- ◆ Outlining the Training Content
- ◆ Determining the Instructional Methods
- ◆ Developing and Using Training Aids
- ◆ Developing a Lesson Plan
- ◆ Using Facilitation Skills
- ◆ Part 48 Requirements

**Technical Coordinator: Bret Park**

**Course Length: 3 days**

**Tuition: \$252.00**

**Dates: Dec 13 - 15, 2016    March 21 - 23, 2017**

**June 27 - 29, 2017    September 12 - 14, 2017**

***Scheduled upon request with a minimum of 10 attendees,  
maximum of 20***



## INTERMEDIATE TOXICOLOGY

[IH606G]

Scheduling  
at Worksite  
Available  
Upon Request

This course will provide the students with a review of the uptake, distribution, metabolism, and elimination of industrial and environmental chemicals. Dose- and time-response relationships will be discussed. Toxic effects of metals, particulates, solvents, and other chemicals found in the mine environment will be examined.

### Contents:

- ◆ Introduction to Fundamental Concepts of Toxicology
- ◆ Review of Terminology Used in Toxicology
- ◆ Comparison of Inhalation, Ingestion, and Dermal Exposures
- ◆ Definition of Endpoints of Toxicity
- ◆ Summary of Acute Versus Chronic Toxicity
- ◆ Discussion of Toxicity Data Used to Develop Exposure Limits for Humans

<b>Instructor:</b>	<b>Dr. Michelle Schaper</b>
<b>Course Length:</b>	<b>3 days</b>
<b>Tuition:</b>	<b>\$252.00</b>
<b>Dates:</b>	<b><i>Scheduled upon request with a minimum of 8 attendees</i></b>

## **INTRODUCTION TO MINING**

[MS701G]

The mining industry fulfills the important function of providing society's raw materials. Increasingly, mining has become more complex, due to rapid technological changes and comprehensive regulations. This complexity coupled with the industry's rich and traditional use of unique terminology can make understanding mining difficult for persons unfamiliar with it. This course introduces participants to the broad scope of mining, and is for those with little or no mining knowledge. It will provide participants with a working understanding of the various aspects of the industry.

### **Contents:**

- ◆ Mining Terminology
- ◆ Mineral Exploration and Geology
- ◆ Description of the Different Mining Methods
- ◆ Coal Preparation and Mineral Processing

### **Health and Safety Regulations including:**

- ◆ Ground/Roof Control
- ◆ Ventilation and Dust Control
- ◆ Haulage and Hoisting
- ◆ Personal Protective Equipment
- ◆ Mapping
- ◆ Mine Examinations
- ◆ Electricity
- ◆ Explosives
- ◆ Industrial Hygiene

**Technical Coordinators: Chip Clay  
Nathan Neely**

**Course Length: 2 days**

**Tuition: \$168.00**

**Dates: July 25 - 26, 2017**

***Scheduled upon request with a minimum of 8 attendees,  
maximum of 15***

## **LAW/REGULATION/POLICY, CITATION/ ORDER WRITING, INSPECTION PROCEDURES [LP710G]**

This course is designed for anyone in the mining industry to gain a better understanding of enforcement procedures used to protect the health and safety of all miners. The course reviews handbooks, policy, and procedures used to enforce the Mine Acts (1977/2006) and 30 CFR (Code of Federal Regulations.) Each course will be designed for either coal or metal/nonmetal. Classroom activities and discussions will blend in with researching materials covered. A copy of the combined Mine Acts, 30 CFR, and Program Policy will be provided.

### **Contents:**

- ◆ Pre-Inspection Conference
- ◆ Inspection
- ◆ Notetaking
- ◆ Pictures
- ◆ Discussion of Violations at Issuance
- ◆ Close-Out Conference
- ◆ Determining Root Cause
- ◆ Research of Regulations/Policy/Procedures

**Technical Coordinator: Brandon Ellison**  
**Course Length: 3 days**  
**Tuition: \$252.00**

***Scheduled upon request with a minimum of 10 attendees,  
maximum of 20***

## **MARSHALL UNIVERSITY MASTERS OF SAFETY DEGREE (EMPHASIS IN MINE SAFETY)**

[NEMU003]

Courses will be offered pursuant to the Masters of Safety Degree (Mining Emphasis) program offered by the Academy through Marshall University. Courses will be offered in a blended learning environment using distance learning technology. Online courses are also planned to be offered in the Spring, Summer, and Fall 2017 semesters. Marshall University offers courses online through Blackboard. This is available to any person enrolled as a Marshall University graduate student. It is extremely important that you be accepted into the program by Marshall University so that any computer issues that may arise can be resolved prior to beginning the course.

Students must be admitted into the program **prior** to course enrollment. Application for Graduate Admission forms may be obtained by calling Cheryl Stevens at (304) 256-3236 or by going online to [www.marshall.edu](http://www.marshall.edu). College Chemistry 203, Math 130 (college algebra), and Physics 101 or the equivalent are prerequisites for admission to this program, as is a minimum undergraduate GPA of 2.5 or being registered as a professional engineer, or scoring at the mean or above on one area of the General GRE.

Enrollment for these online classes will be limited to 25 students and is on a first come first serve basis. First priority will be given to students who have taken courses previously in pursuit of this degree; those persons successfully admitted into the program through Marshall University will be given next preference.

Tuition and other related fees will be determined and posted at a later date. For more information, contact Kevin Malay by email at [malay.kevin@dol.gov](mailto:malay.kevin@dol.gov) or at (304) 256-3539.

<b>Technical Coordinator:</b>	<b>Kevin Malay</b>
<b>Dates:</b>	<b>Fall 2016, Spring 2017 Summer 2017, Fall 2017</b>

## **MINE ACCIDENT INVESTIGATION TECHNIQUES**

**[IV604G]**

**Scheduling  
at Worksite  
Available  
Upon Request**

This course is directed towards safety directors, managers, foremen, union safety committee persons, state mine inspectors, or mining industry (metal/nonmetal or coal) individuals involved in accident investigation. Course content reviews basic guidelines, procedures, and techniques for the preparation and handling of investigations of accidents and other incidents involving health and safety in the mining industry.

Classroom activities and discussions cover reasons for accident investigations, the investigative process, data collection, accident reconstruction, and proper analysis for corrective actions.

### **Contents:**

- ◆ Brief Review of MSHA's Accident Reporting Requirements
- ◆ Pre-Investigation Activities
- ◆ Accident Investigation Procedures
- ◆ Accident Scene Analysis
- ◆ Photography and Sketching
- ◆ Interviewing Techniques
- ◆ Finding Root Causes of Accidents
- ◆ Developing Corrective Actions

<b>Technical Coordinator:</b>	<b>David Elkins</b>
<b>Course Length:</b>	<b>2 days</b>
<b>Tuition:</b>	<b>\$168.00</b>

***Scheduled upon request with a minimum of 10 attendees.***

## **MINE CONSTRUCTION, MAINTENANCE, AND REPAIRS SAFETY**

[MS615G]

Scheduling  
at Worksite  
Available  
Upon Request

This course is designed for the mining construction industry, related support groups, mining regulatory agencies, and others that are involved with the planning, design, and application of mine construction and maintenance activities.

### **Contents:**

- ◆ Accident Analysis and Prevention
- ◆ Effective Work Area Examinations
- ◆ Mobile Equipment Examinations
- ◆ Fall Prevention
- ◆ Basic Crane Safety
- ◆ Material Storage and Handling
- ◆ Conveyor Belt Safety
- ◆ Confined Space Safety
- ◆ Wire Ropes and Slings
- ◆ Surface Installations

**Technical Coordinators:** Johnnie Tyler  
Roger Montali

**Course Length:** 2 days

**Tuition:** \$168.00

**Dates:** *Scheduled upon request with  
a minimum of 10 attendees*

## **MINE EXPLOSION PREVENTION**

[VN701G]

Scheduling  
at Worksite  
Available  
Upon Request

This course will review the causes and prevention of underground bituminous coal mine explosions. Students will learn to identify and address conditions which are known to cause or propagate explosions. Applicable federal mining laws will be discussed and explained.

### **Content will include but not limited to:**

- ◆ Sources and Control of Coal Dust
- ◆ Accumulation of Combustible Material
- ◆ Rock Dust Application and Sampling

**Technical Coordinators:** **Jonah Pritt**  
**Keith Stone**

**Course Length:** **1 day**

**Tuition:** **\$84.00**

**Dates:** ***Scheduled upon request with  
a minimum of 10 attendees***

## **MINE HOIST AND ELEVATOR INSPECTION PROGRAM TRAINING [HS606G]**

Scheduling  
at Worksite  
Available  
Upon Request

This training module covers the inspection of mine hoist and elevators and the impact of the mine environment on critical hoist and elevator components. An emphasis will be made also on Mechanical Escape Facilities. It will enable the student to perform basic mine hoist and elevator inspections, focusing on critical safety concerns, including those identified in recent mine accidents. The material will be correlated to the applicable sections of 30 CFR, the ASME A17 Elevator Code, and variety of information pertaining to wire ropes.

During the hands-on time, the student will be taught the proper way to measure a wire rope, when it is required, locations of measurements, and the “out of service” criteria for both wire ropes and their terminations. This course is for MSHA coal and metal/nonmetal mine safety and health inspectors and industry personnel.

### **Contents:**

- ◆ Wire Rope Technology
- ◆ Terminations and Attachments
- ◆ Removal Criteria According to 30 CFR
- ◆ A Review of the ASME A17 Elevator Code
- ◆ Hazard Recognition
- ◆ Inspection Procedure
- ◆ Citation and Order Writing

**Technical Coordinators:** Cliff Adkins  
Randy Smith

**Course Length:** 3 days

**Tuition:** \$252.00

**Dates:** *Scheduled upon request with a  
minimum of 10 attendees*



## MINE RESCUE TRAINING

[ME601G]

Scheduling  
at Worksite  
Available  
Upon Request

This course is designed for mine rescue teams and mining industry personnel who may be associated with responding to mine emergencies, such as mine fires, explosions, and inundations. The major part of the training involves participation in exercises in the Mine Simulation Laboratory.

### Contents:

- ◆ Mine Emergency Response Overview
- ◆ Mine Emergency Operations
- ◆ Mine Emergency Personnel
- ◆ Mine Emergency Communications and Decision Making
- ◆ Mine Emergency Practices and Procedures
- ◆ Mine Emergency Rescue and Recovery Strategy
- ◆ Tactical Implementation of Operations

**Technical Coordinator:** Mack Wright

**Course Length:** 1 day

**Tuition:** \$84.00\*

**Dates:** *Scheduled upon request with  
a minimum of 6 attendees*

- \* Tuition may be waived for mine rescue team members participating in team training activities, up to ten (10) days per calendar year.

# MINE RESCUE VISIO MAPPING AND MAP SCORING TRAINING

[ME609G]

Scheduling  
at Worksite  
Available  
Upon Request

This course is for all interested Mine Rescue Team Members, Mine Rescue Problem Designers, Mine Rescue Map Judges, and persons involved in mine accident investigation work. This class will be scaled and tailored to the students attending specific to their needs (accident investigation, mine rescue team members, mine rescue judges, ect. We will try to make the class as job related to each group as possible.

## Contents:

- ◆ Introduction to Microsoft® Visio and saving the completed map or drawing. This will include downloading templates and stencils from MSHA.GOV and importing stencils.
- ◆ Review of drawing a scaled map or drawing.
- ◆ Review of map symbols (stencils) used for both mine rescue maps and accident investigation drawings.
- ◆ Adding layers within a drawing and assigning objects to a layer.
- ◆ Mapping of items or conditions encountered by a mine rescue or accident investigation team.
- ◆ Introduction into mine rescue contest map scoring protocols and procedures, including the use of scanner for scanning and saving “hand drawn” paper maps.
- ◆ Each student will receive a laminated “Visio quick reference card” to assist them in learning the shortcuts related to Microsoft® Visio.

The Visio Electric Mapping and Map Scoring Class is an eight (8) hour class. Participants may bring their own computers that are equipped with Microsoft® Visio 2010 or 2013 to the training class or computers will be provided by the National Mine Academy.

<b>Technical Coordinator:</b>	<b>Chip Clay</b>
<b>Course Length:</b>	<b>1 day</b>
<b>Tuition:</b>	<b>\$84.00</b>
<b>Dates:</b>	<b><i>Scheduled upon request with a minimum of 2 attendees, maximum of 6.</i></b>

## MINE VENTILATION [VN700G]

Scheduling  
at Worksite  
Available  
Upon Request

This course will review the basic principles of underground coal mine ventilation along with applicable Federal mining laws.

### **Content will include but not limited to:**

- ◆ Mine Fans
- ◆ Mine Gases
- ◆ Air Readings
- ◆ Ventilation Plans
- ◆ Mine Maps
- ◆ Bleeders
- ◆ Seals
- ◆ Ventilation Control
- ◆ Face Ventilation
- ◆ Outby Ventilation

**Technical Coordinators:** Jonah Pritt  
Keith Stone

**Course Length:** 3 days

**Tuition:** \$252.00

**Dates:** *Scheduled upon request with  
a minimum of 10 attendees*

# NOISE HAZARDS, REGULATION, AND CONTROL

[IH321G]

Scheduling  
at Worksite  
Available  
Upon Request

This course provides the participant with information on the hazards associated with overexposure to noise. It thoroughly reviews 30 CFR Part 62 and appropriate monitoring and control methods. The course also discusses the elements of an effective hearing conservation program.

## Contents:

- ◆ Characteristics of Noise
- ◆ Impact of Noise on Health
- ◆ Noise Monitoring
- ◆ Sound Level Meters
- ◆ Dosimeters
- ◆ Octave Band Analysis
- ◆ Audiometric Examinations
- ◆ Noise Regulation - Compliance Discussion
- ◆ Exposure Levels
- ◆ Monitoring
- ◆ Hearing Conservation Programs
- ◆ Training Requirements
- ◆ Control Methods

**Technical Coordinators:** Donald Booth  
Marcus Ramirez

**Course Length:** 3 days

**Tuition:** \$252.00

**Dates:** *Scheduled upon request with  
a minimum of 10 attendees*



## OFF ROAD TIRE SAFETY

[HL605C]

This course is designed for the mining, construction, industrial industries, related support groups, mining regulatory agencies, and others that are involved with application of mine construction, maintenance, and inspection of off road tires. Thirty-six miners have lost their lives in the last twenty years due to off road tire ruptures.

### Contents:

- ◆ Accident Analysis and Prevention
- ◆ Effective Work Area Examinations
- ◆ Zones of Tires
- ◆ Tread, Crown, Sidewall, Bead Zone Examinations
- ◆ Identification of Common Tire Examinations
- ◆ Method of Examination
- ◆ Damage Zone Examples

**Technical Coordinator:** Roger Montali

**Course Length:** 6 hours

**Tuition:** \$84.00

**Dates:** *Scheduled upon request with  
a minimum of 10 attendees*

## **SURFACE FACILITIES AND COAL PREPARATION**

[PP601C]

Scheduling  
at Worksite  
Available  
Upon Request

This course is designed to familiarize the student with equipment and processes used in coal preparation plants; hazards that might exist around preparation plants; and inspection requirements for such plants. This course has been expanded to include structural safety in an effort to eliminate surface structural failures in the mining industry.

### **Contents:**

- ◆ Structural Safety
- ◆ Equipment Guarding
- ◆ Stockpile Safety
- ◆ Delivery Methods to the Plant
- ◆ Crushing, Sizing, and Washing Processes
- ◆ Dewatering and Drying
- ◆ Storage of Raw and Clean Coal
- ◆ Potential Hazards
- ◆ Preparation Plant Inspection

**Technical Coordinator:** Johnnie Tyler

**Course Length:** 3 days

**Tuition:** \$252.00

**Dates:** *Scheduled upon request with  
a minimum of 10 attendees*

## WORKPLACE EXAMINATIONS

[VN702G]

Scheduling  
at Worksite  
Available  
Upon Request

This course is designed for mine examiners. Discussion will focus on what the examiner should be looking for during a workplace examination. Applicable Federal mining laws will be discussed and explained.

### Content will include but not limited to:

- ◆ Pre-shift Examinations
- ◆ Supplemental Examinations
- ◆ On-Shift Examinations
- ◆ Weekly Examinations
- ◆ Hazard Identifications

**Technical Coordinators:** Jonah Pritt  
Keith Stone

**Course Length:** 1 day

**Tuition:** \$84.00

**Dates:** *Scheduled upon request with  
a minimum of 10 attendees*

## Seminars/Workshops for MSHA and the Mining Industry

The Academy Seminars/Workshops described in this section are available to MSHA and industry personnel.



If you need more information about contents of a seminar/workshop, contact the technical coordinator for that seminar/workshop at (304) 256-3100 or Cheryl Stevens at (304) 256-3236.

## TO ENROLL CONTACT:

National Mine Health and Safety Academy  
Student Services Branch  
1301 Airport Road  
Beaver, West Virginia 25813-9426

TELEPHONE: (304) 256-3252  
FAX: (304) 256-3251



## **BLASTING SEMINAR**

**[EX524G]**

This seminar is designed for company managers, blasting engineers, blasters, state and Federal mine safety and health inspectors (coal and metal/nonmetal), and others involved with the planning, design, and the use of explosives in the mining industry. The most recent blasting techniques, trends, and developments will be discussed. Participants will have the opportunity to share ideas in small group sessions.

### **Contents:**

- ◆ Vibration Analysis/Seismographs/Efficient Blasting Techniques
- ◆ Storage of Explosives
- ◆ Handling and Use of Explosives
- ◆ Silica Dust and Toxic Gas Hazards in Blasting
- ◆ Blasting Agents and Emulsions

<b>Technical Coordinator:</b>	<b>Roger Montali</b>
<b>Course Length:</b>	<b>2 days</b>
<b>Tuition:</b>	<b>None</b>
<b>Dates:</b>	<b>January 18 - 19, 2017</b>

# FIRST RESPONDER SAFETY / MINE SITE EMERGENCIES WORKSHOP

[GS600G]

Scheduling  
at Worksite  
Available  
Upon Request

This is a one-day workshop designed to provide MSHA personnel, the mining industry, miners' representatives, firefighters, law enforcement personnel and emergency medical personnel with information and precautions that should be taken before or while responding to an emergency at surface mines, surface areas of underground mines, and surface mining facilities.

## Contents:

- ◆ Emergency Response Planning
- ◆ Large Haul Truck and Equipment Fires
- ◆ Structures In and Around Surface Facilities
- ◆ Use of Mine Equipment for Rescue & Fire Fighting
- ◆ Traffic Control on Surface Mine Roadways
- ◆ First Responder Vehicle Maintenance (Brakes & Steering)
- ◆ National Incident Management System (NIMS) Overview

## Surface Mine Hazards Addressed:

- ◆ Explosives Storage
- ◆ Surge Pile Safety
- ◆ Draw-off Tunnels
- ◆ Fuel Storage (stationary and mobile)
- ◆ Belt Conveyor and Travelway Safety
- ◆ Electricity
- ◆ Preparation Plants and Mills
- ◆ Off Road Haul Trucks and End Loaders
- ◆ Highwall Safety and Highwall Mining Machines
- ◆ Chemicals and Gases Common to Mines and Facilities
- ◆ Surface Areas of Underground Mines

**Technical Coordinator:** Johnnie Tyler

**Course Length:** 1 day

**Tuition:** None

**Dates:** *Scheduled upon request with  
a minimum of 10 attendees*

# MINE CONSTRUCTION, MAINTENANCE, AND REPAIRS SAFETY WORKSHOP

[MS502G]

This workshop is designed for the mining construction industry, related support groups, mining regulatory agencies, and others that are involved with the planning, design, and application of mine construction and maintenance activities.

## Topics:

- ◆ Risk Management
- ◆ Contractor Pre-Qualification
- ◆ Hearing Loss Prevention
- ◆ Fire Extinguisher Simulator Training
- ◆ Trenching Regulations and Practices
- ◆ Manitowac Crane Safety
- ◆ Crane Safety Inspections (Hands-on)
- ◆ Prevention of “Rigger Mortis” - A Systematic Approach to Rigging
- ◆ Welding Safety
- ◆ Electrical Accidents Analysis and Prevention
- ◆ Construction Blasting
- ◆ Wheels and Rims Safety Hazards
- ◆ Scaffold Safety

**Technical Coordinators:** Johnnie Tyler  
Roger Montali

**Course Length:** 3 days

**Tuition:** None

**Dates:** *Scheduled upon request with  
a minimum of 8 attendees*

## **ROOF CONTROL SEMINAR**

[RC501C]

This seminar is designed for miners, company managers, engineers, trainers, roof bolter machine operators, and for any individual involved in coal mine roof safety. Federal and state enforcement personnel desiring to increase their knowledge of the latest developments in roof and rib control will also find this seminar very beneficial.

This seminar will update personnel on new products and methods related to roof stability. It will also include presentations by personnel from the Academy, Technical Support, MSHA headquarters, other government agencies, and industry. All subjects will incorporate safe mining practices which will help reduce roof fall injuries and fatalities. The seminar will discuss new roof control techniques, trends, and developments.

### **Contents:**

- ◆ New Roof Bolting Products
- ◆ Supplemental Supports
- ◆ Roof Control Fatality Trends and Prevention
- ◆ Roof Control Machinery Updates

**Technical Coordinators: Jon Braenovich  
Matilda Collins**

**Course Length: 1 day**

**Tuition: None**

**Dates: May 31, 2017**

## **SURFACE HAULAGE WORKSHOP**

[HL502G1]

This workshop brings together representatives of the mining industry and others that are involved with the planning, design, and use of surface mine haulage equipment and/or systems. The seminar will provide an opportunity for the participants to exchange information and observe firsthand new technology, equipment, and innovations that are being used in the mining industry. Industry and other technical presenters will provide presentations, exhibits, and equipment displays that allow the participants to interact in small groups with the presenters and others.

### **Contents:**

- ◆ Equipment Brake Systems
- ◆ Equipment Safety Instructions
- ◆ Tire Care and Maintenance
- ◆ Crane Safety
- ◆ Solutions to Mobile Equipment Blind Spots
- ◆ Dump Point Safety
- ◆ Diesel-Electric Equipment
- ◆ Fire Suppression on Haulage Equipment
- ◆ Haul Roads – Keys to Accident Prevention
- ◆ Hazards and Accident Prevention in Belt Conveyor Operations
- ◆ New Automation Technologies – Conveyor, Plants, Mills
- ◆ Safe Handling and Transport of Bulk Blasting Agents
- ◆ Safety Aspects of Mounting/Demounting Tires
- ◆ Haul Road Design

<b>Technical Coordinator:</b>	<b>Roger Montali</b>
<b>Course Length:</b>	<b>2 days</b>
<b>Tuition:</b>	<b>None</b>
<b>Dates:</b>	<b>TBD</b>

## **TRAM/NATIONAL MINE INSTRUCTORS SEMINAR**

**[GS501G]**

This seminar provides opportunities for health and safety trainers to improve their training programs with new materials and new ideas. The seminar will also include an exhibit of training materials developed by MSHA, state grants recipients, and the mining industry. Small workshops allow participants to interact with workshop leaders and other participants.

### **Contents:**

- ◆ Innovative Instructional Techniques
- ◆ Instructional Technology and Computer Applications
- ◆ Underground Mine Safety (Metal/Nonmetal and Coal Topics)
- ◆ Surface Mine Safety (Metal/Nonmetal and Coal Topics)
- ◆ General Safety
- ◆ Health
- ◆ Ergonomics
- ◆ Supervisory Issues

Another feature of the seminar is the Training Materials Competition. Health and safety training materials entered in the competition will be judged and winners will be announced at the Seminar. All materials entered in the competition will be displayed.

<b>Technical Coordinator:</b>	<b>Cheryl McGill</b>
<b>Course Length:</b>	<b>2½ days</b>
<b>Tuition:</b>	<b>None</b>
<b>Dates:</b>	<b>October 11 - 13, 2016</b> <b>October 10 - 12, 2017</b>

## **Technical Specialists Training**

MSHA mine safety and health inspectors, supervisors, and specialists are to receive a minimum of two weeks advanced training every two years.

Listed below are the groups and dates for which training sessions have been scheduled at the Academy:

### **ACRI/CLR Training [LP303G]**

**May 8 - 12, 2017**

### **Accident Investigation**

**TBD**

### **Administrative Staff Meeting [GS706G]**

**April 10 - 14, 2017**

### **Assistant District Manager Meeting/Training**

**TBD**

### **Coal Assistant District Managers Meeting [GS400ADM]**

**TBD**

### **Coal Field Office Supervisors [GS704G]**

**July 11 - 13, 2017**

### **Coal MERD**

**November 14 - 18, 2016**

### **MSHA Dam Safety Training [IM504G]**

**Coordinator: Jared Adkins**

**May 2 - 4, 2017**

### **District Manager Meeting/Training**

**March 20 - 24, 2017**

**Electrical Specialists**

March 13 - 17, 2017

**Family Liaison Training** [GS511G]

TBD

**Health Specialists** [IH401G]

June 5 - 9, 2017

**MNM Annual Field Office Supervisors** [GS701MNM]

TBD

**MNM Journeyman Mine Safety and Health Inspectors**

[LP311M - 56 hours]

Coordinator: Bret Park

October 31 - November 10, 2016,

April 3 - 14, 2017

**MNM Managers Meeting (2)** [GS700MNM]

TBD

**MNM MERD Training** [GS702MNM]

TBD

**MSHA Mine Rescue Team Training** [ME707G]

TBD

**Roof Control Specialists** [RC401C - 21 hours]

Coordinators: Jon Braenovich, Matilda Collins

April 25 - 28, 2017

**Special Investigators** [IV402G]

Coordinator: TBD

» Basic SI Module I

February 28 - March 16, 2017

» SI Recertification

TBD



» **Complaint Processor Certification Training**  
**June 20 - 22, 2017**

» **Basic SI Module II**  
**August 1 - 10, 2017**

**Surface Coal Mine Safety and Health Inspectors**

[LP312C - 56 hours]

**Coordinator: Johnnie Tyler**  
**TBD**

**Underground Coal Mine Safety and Health Inspectors  
Journeyman Retraining**

[LP311C - 56 hours]

**Coordinator: Brandon Ellison**  
**February 14 - 16, 2017**  
**May 16 - 18, 2017**  
**July 11 - 13, 2017**  
**August 15 - 17, 2017**

**VTC Training**  
**Districts 2 & 3**  
**TBD**

**Districts 5 & 8**  
**TBD**

**Ventilation Specialist**  
**March 28 - 30, 2017**

## **Courses and Seminars/Workshops Alphabetically**

	<b>Page</b>
Accident Prevention Techniques .....	90
Annual Retraining for Impoundment Qualification .....	82
Atmospheric Monitoring Systems (AMS) with Emphasis on Fire Protection .....	45
Blasting Seminar .....	113
Blasting (Surface) (Coal) .....	46
Blasting (Surface) (MNM) .....	23
Continuous Personal Dust Monitor (CPDM) Maintenance and Calibration Certification .....	83
Continuous Personal Dust Monitor (CPDM) Sampling Certification.....	84
Electrical Hazards.....	24
Electrical Safety for Coal Miners .....	47, 91
Electrical Safety for Metal/Nonmetal Miners.....	92
First Aid/ CPR/ AED Usage .....	25, 48, 85, 93
First Responder Safety/Mine Site Emergencies Workshop .....	26, 49, 114
Ground Control Hazards.....	27
Haulage (Surface) (Coal).....	50
Haulage (Surface) (MNM) .....	28
Hazard Communication (HazCom).....	94
Industrial Hygiene.....	51
Industrial Hygiene: Sampling for Respirable Silica Dust and Noise .....	95
Inspector's Portable Applications for Laptops (IPAL) Review (MNM and Coal) .....	29, 52
Instructor Training Workshop (Part 48).....	96
Intermediate Toxicology.....	97

	<b>Page</b>
Introduction to Mining .....	98
Law/Regulation/Policy, Citation/Order Writing, Inspection Procedures .....	99
Longwall Mining and Inspection Procedures .....	53
Marshall University Masters of Safety Degree ....	30, 54, 100
Microsoft® Excel 2010 – Basic.....	76
Microsoft® Excel 2010 – Intermediate.....	77
Microsoft® Excel 2010 – Advanced .....	78
Microsoft® PowerPoint 2010 .....	79
Microsoft® Word 2010 .....	80
Mine Accident Investigation and Report Writing .....	31, 55
Mine Accident Investigation Techniques .....	101
Mine Construction, Maintenance, and Repairs Safety ....	102
Mine Construction, Maintenance, and Repairs Safety Workshop .....	115
Mine Explosion Prevention .....	56, 103
Mine Hoist and Elevator Inspection Program Training.....	32, 57, 104
Mine Rescue Training.....	105
Mine Rescue Visio Mapping and Map Scoring Training ..	106
Mine Ventilation .....	58, 107
Noise Hazards, Regulation, and Control .....	59, 108
Off Road Tire Safety .....	109
Qualification for Impoundment Inspection .....	86
Respirable Coal Mine Dust Sampler Calibration/ Maintenance Certification .....	87
Respirable Coal Mine Dust Sampling Certification.....	88
Roof Control Seminar .....	60, 116
Slope and Shaft Sinking Safety .....	61

	<b>Page</b>
Surface Facilities and Coal Preparation .....	62, 110
Surface Haulage Workshop.....	117
Tailings Dam and Waste Pile Inspection -	
Metal/Nonmetal .....	33
TRAM/National Mine Instructors Seminar .....	118
Underground Diesel Equipment/Ventilation.....	63
Underground Electrical Circuit Protection Overview.....	64
Underground Haulage, Transportation, and	
Machinery (Coal) .....	65
Underground Ventilation for Metal/Nonmetal Mines .....	34
Workplace Examinations .....	66, 111

## **Schedule of Academy Events By Date**

### **October 9 – 15, 2016**

- ◆ TRAM/National Mine Instructors Seminar  
10/11-13/2016
- ◆ Continuous Personal Dust Monitor Sampling Certification  
10/12/2016
- ◆ Continuous Personal Dust Monitor Maintenance and  
Calibration Certification  
10/13/2016

### **October 30 – November 5, 2016**

- ◆ Metal/Nonmetal Journeyman Training  
10/31 - 11/10/2016

### **November 6 – 12, 2016**

- ◆ Continuous Personal Dust Monitor Sampling Certification  
11/8/2016
- ◆ Continuous Personal Dust Monitor Maintenance and  
Calibration Certification  
11/9/2016

### **November 13 – 19, 2016**

- ◆ Qualification for Impoundment Inspection (8hr)  
11/15/2016
- ◆ Annual Retraining for Impoundment Qualification (4hr)  
11/17/2016

### **December 11 – 17, 2016**

- ◆ Continuous Personal Dust Monitor Sampling Certification  
12/13/2016

- ◆ Continuous Personal Dust Monitor Maintenance and Calibration Certification  
12/14/2016
- ◆ Instructor Training Workshop  
12/13-15/2016

### **January 8 – 14, 2017**

- ◆ Continuous Personal Dust Monitor Sampling Certification  
1/11/2017
- ◆ Continuous Personal Dust Monitor Maintenance and Calibration Certification  
1/12/2017

### **January 15 – 21, 2017**

- ◆ Blasting Seminar  
1/18-19/2017

### **February 5 – 11, 2017**

- ◆ Microsoft® Excel 2010 - Basic  
2/7-8/2017

### **February 12 – 18, 2017**

- ◆ UG CMI Inspector Retraining  
2/14-16/2017

### **February 26 – March 4, 2017**

- ◆ Basic SI Module I  
2/28-3/16/2017

### **March 12 – 18, 2017**

- ◆ Mine Accident Investigation & Report Writing  
3/14-23/2017

### **March 19 – 25, 2017**

- ◆ Instructor Training Workshop  
3/21-23/2017

- ◆ Continuous Personal Dust Monitor Sampling Certification  
3/22/2017
- ◆ Continuous Personal Dust Monitor Maintenance and Calibration Certification  
3/23/2017

**March 26 – April 1, 2017**

- ◆ Ventilation Specialist  
3/28-30/2017

**April 2 – 8, 2017**

- ◆ MNM Journeyman Retraining  
4/3-14/2017

**April 9 – 15, 2017**

- ◆ Microsoft Excel 2010 – Intermediate  
4/11-12/2017

**April 16 – 22, 2017**

- ◆ Continuous Personal Dust Monitor Sampling Certification  
4/19/2017
- ◆ Continuous Personal Dust Monitor Maintenance and Calibration Certification  
4/20/2017

**April 23 – 29, 2017**

- ◆ Roof Control Specialist  
4/25-28/2017

**May 7 – 13, 2017**

- ◆ Mine Accident Investigation and Report Writing  
5/9-18/2017
- ◆ Qualification for Impoundment Inspection  
5/9/2017
- ◆ SI Recertification  
5/10-19/2017

- ◆ Annual Retraining for Impoundment Qualification  
5/11/2017

#### **May 14 – 20, 2017**

- ◆ UG CMI Inspector Retraining  
5/16-18/2017
- ◆ Respirable Coal Mine Dust Sampling Certification  
5/16/2017
- ◆ Respirable Coal Mine Dust Sampler Calibration/  
Maintenance Certification  
5/17/2017

#### **May 28 – June 3, 2017**

- ◆ Roof Control Seminar  
5/31/2017

#### **June 4 – 10, 2017**

- ◆ Microsoft Excel 2010 - Advanced  
6/6-7/2017

#### **June 11 – 17, 2017**

- ◆ Microsoft PowerPoint 2010  
6/13-14/2017

#### **June 18 – 24, 2017**

- ◆ Complaint Processor Certification  
6/20-22/2017

#### **June 25 – July 1, 2017**

- ◆ Instructor Training Workshop  
6/27-29/2017

#### **July 9 – 15, 2017**

- ◆ UG CMI Journeyman  
7/11-13/2017
- ◆ Mine Accident Investigation and Report Writing  
7/11-20/2017



- ◆ Respirable Coal Mine Dust Sampling Certification  
7/11/2017
- ◆ Respirable Coal Mine Dust Monitor Maintenance  
Calibration and Certification  
7/12/2017

**July 23 – 29, 2017**

- ◆ Introduction to Mining  
7/25-26/2017

**July 30 – August 5, 2017**

- ◆ Basic SI Module II  
8/1-10/2017

**August 13 – 19, 2017**

- ◆ Qualification for Impoundment Inspection  
8/15/2017
- ◆ Annual Retraining for Impoundment Qualification  
8/17/2017
- ◆ UG CMI Inspector Retraining  
8/15-17/2017

**August 20 – 26, 2017**

- ◆ Continuous Personal Dust Monitor Sampling Certification  
8/22/2017
- ◆ Continuous Personal Dust Monitor Maintenance and  
Calibration Certification  
8/23/2017

**September 3 – 9, 2017**

- ◆ Microsoft Word 2010  
9/6-7/2017

**September 10 – 16, 2017**

- ◆ Instructor Training Workshop  
9/12-14/2017

- ◆ Continuous Personal Dust Monitor Sampling Certification  
9/13/2017
- ◆ Continuous Personal Dust Monitor Maintenance and Calibration Certification  
9/14/2017

**October 8 – 14, 2017**

- ◆ TRAM/National Mine Instructors Seminar  
10/10-12/2017

**December 3 – 9, 2017**

- ◆ Mine Accident Investigation and Report Writing  
12/5-14/2017

**December 10 – 16, 2017**

- ◆ Continuous Personal Dust Monitor Sampling Certification  
12/12/2017
- ◆ Continuous Personal Dust Monitor Maintenance and Calibration Certification  
12/13/2017

## **Metal/Nonmetal Scheduled Training**

- ◆ MMN Managers Meeting (2)
  - TBD
- ◆ MMN Annual Field Office Supervisors Retraining
  - TBD
- ◆ MSHA Mine Rescue Team Training
  - TBD
- ◆ Supervisory Meeting
  - TBD
- ◆ Industrial Hygiene
  - TBD
- ◆ MNM MERD Training
  - TBD
- ◆ MSHA Mine Rescue Team Training
  - TBD

## **Coal Scheduled Training**

- ◆ Family Liaison Training
  - TBD
- ◆ Health Supervisors Meeting
  - 1 Per Quarter
- ◆ ACRI/Conference Litigation (CLR) Training
  - May 8 - 12, 2017
- ◆ Coal Field Office Supervisors
  - July 10 - 17, 2017
- ◆ MSHA Dam Safety Training/Impoundment Specialist
  - May 2 - 4, 2017
- ◆ CSMH MERD/Manager/Supervisor Training
  - November 14 - 18, 2016
- ◆ CSMH Managers Meeting
  - (2) TBD

## **EPD Scheduled Training**

- ◆ EFSMS Team Training (2) - TBD
- ◆ EPD Managers/Supervisors Meeting - TBD
- ◆ JAH Mine Rescue Meeting (2) - TBD
- ◆ EPD Managers - TBD
- ◆ EFSMS Annual Supervisors Training - TBD
- ◆ EFSMS Training Specialists (2) - TBD

## Suggestion Form for New Courses

The National Mine Health and Safety Academy is committed to bring you the very best courses, seminars, and materials to meet your needs. To do this we need your help.

Please use the space below to let us know what you would like.

New courses or variations on existing courses:

Seminars: \_\_\_\_\_  
\_\_\_\_\_

Materials: \_\_\_\_\_  
\_\_\_\_\_

Area of interest: *Check those of interest.*

Coal - Surface

Coal - Underground

Metal/Nonmetal - Surface

Metal/Nonmetal - Underground

Both

Other (specify) \_\_\_\_\_

Name \_\_\_\_\_

Address \_\_\_\_\_

Telephone \_\_\_\_\_ Fax: \_\_\_\_\_  
(area code) (area code)

E-mail address: \_\_\_\_\_

Please complete this form and return to:

National Mine Health and Safety Academy  
ATTN: Department of Instructional Services  
1301 Airport Road  
Beaver, West Virginia 25813-9426  
OR  
FAX: (304) 256-3247



## Enrollment Form

Please complete this form and return to:

National Mine Health and Safety Academy  
ATTN: Student Services Branch  
1301 Airport Road  
Beaver, West Virginia 25813-9426  
OR  
FAX: (304) 256-3251

I plan to attend the \_\_\_\_\_  
course on the following dates: \_\_\_\_\_

Arrival Date: \_\_\_\_\_

Departure Date: \_\_\_\_\_

I will      I will not need lodging on these dates.

**Name:** \_\_\_\_\_  
(LAST) (FIRST) (MIDDLE)

**Title:** \_\_\_\_\_

**Organization:** \_\_\_\_\_

**Address:** \_\_\_\_\_

**City:** \_\_\_\_\_

**State:** \_\_\_\_\_ **Zip Code:** \_\_\_\_\_

**Telephone:** \_\_\_\_\_ **Fax:** \_\_\_\_\_  
(area code) (area code)

**E-mail address:** \_\_\_\_\_

***Confirmation will be mailed or faxed to you.***

Confirmed by: \_\_\_\_\_ Date: \_\_\_\_\_





## Other Available Catalogs

The Academy also publishes a Catalog of Training Products for the Mining Industry. To obtain a copy of the products catalog, or additional copies of this catalog, please complete this form and return to:

National Mine Health and Safety Academy  
ATTN: Printing and Property Management Branch  
Department of Instructional Materials  
1301 Airport Road  
Beaver, West Virginia 25813-9426  
CALL: (304) 256-3257  
FAX: (304) 256-3368  
E-MAIL: MSHADistributionCenter@dol.gov

### Please indicate the number of catalogs you are requesting:

(Number)

\_\_\_\_\_ Catalog of Training Products for the Mining Industry

\_\_\_\_\_ Courses for MSHA and the Mining Industry  
(additional copies)

Name: \_\_\_\_\_

Title: \_\_\_\_\_

Organization: \_\_\_\_\_

Address: \_\_\_\_\_

City: \_\_\_\_\_

State: \_\_\_\_\_ Zip Code: \_\_\_\_\_

Telephone: \_\_\_\_\_ Fax: \_\_\_\_\_  
(area code) (area code)

**Please note: Catalogs referred to on this page  
are also available online at [www.msha.gov](http://www.msha.gov)**





**Visit the Department of Labor  
at [www.dol.gov](http://www.dol.gov)**

**U.S. Department of Labor**

National Mine Health and Safety Academy

1301 Airport Road

Beaver, West Virginia 25813-9426

Official Business

FIRST-CLASS MAIL  
POSTAGE & FEES PAID  
U.S. DEPARTMENT OF LABOR  
Permit No. G-745